

# SUCTION AND TRANSPORT HOSE CRUSH-RESISTANT

## Master-PUR STEP

### Material

Hose wall: 100% pure polyester polyurethane.

Spiral: polyurethane

### Applications

- Ideally suitable as suction hose where conventional hoses can be deformed by bad operating conditions on the floor
- Dust and powder conveyance
- Wood processing
- Light food processing
- Pharmaceutical industry
- Protective hose

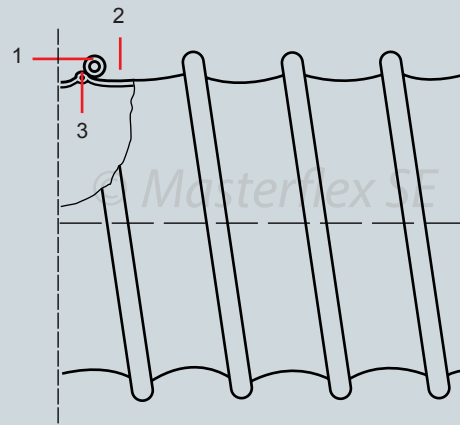
### Properties

- **Antistatic, surface resistance  $R_o < 10^9$  ohm**
- **Flame-resistant**
- **Hose wall (conforms to FDA food contact as described in book 21, section 177.2600 and 177.1680)**
- Crush-resistant
- High resistance to mechanical loads
- Highly abrasion-resistant
- Good flexibility
- Super lightweight
- Optimum flow characteristics
- Oil/petroleum-proof
- Halogen/plasticizer-free
- Good chemical resistance
- Good UV/ozone resistance
- High tensile and burst strength



### Construction

1. Hollow-profile spiral
2. Hose wall: polyurethane
3. **Static wire available on request**



### Temperature Range

- -22°F to +195°F
- Intermittent to +260°F

### Chem. Resistance

See resistance table



The PUR hose series combines the 3 most important features of a spiral hose into 1 product: antistatic + flame-resistant + food-grade.

A combination with unbeatable features!

-Dr. Les Spark

# Master-PUR STEP

Dia (in.)	Positive (in. w.c.)	Negative (in. w.c.)	*Bending radius (in.)	Outer Dia (in.)	Weight (lbs./ft.)	Product Code
2.00	345	76	2.40	2.44	0.27245	324-050-618
2.50	281	63	3.00	3.00	0.35410	324-063-618
3.00	245	52	3.00	3.48	0.40931	324-075-618
3.50	190	52	4.00	4.04	0.49030	324-090-618
4.00	185	38	4.00	4.48	0.53680	324-100-618
4.50	159	38	4.60	5.04	0.62650	324-115-618
5.00	147	38	5.00	5.52	0.68100	324-125-618
5.50	121	26	5.60	6.04	0.77165	324-140-618
6.00	121	26	6.00	6.53	0.80520	324-150-618
6.40	121	26	6.40	6.84	0.87230	324-160-618

\*Referring to the inner side of the elbow of hose.  
 The above mentioned data refers to an average and ambient temperature of 68° F. Subject to technical changes and color variations.  
 Please refer to technical data sheet when selecting hose.

## Standard Production

- Diameter: 2" to 6.4"
- Color: hose wall clear with blue spiral
- Standard lengths: 25'

## Available on Request

- Special lengths up to 50'
- Static wire available on request
- Special diameters metric

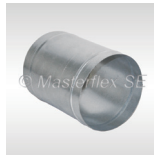
## Installation and connection possibilities



Master-Grip hose clamp, screwable



Car-Grip hose clamp, screwable



Hose connector



Hose reducer, symmetrical