

# MEDIUM/HIGH TEMPERATURE HOSE FOR TEMPERATURES UP TO +1200°F

## Master-Clip HT 1200

### Material

Hose wall double layer:

Inner hose wall: heat resistant fabric

Outer hose wall: special coated high temperature fabric, asbestos free, reinforced by woven in stainless steel wire

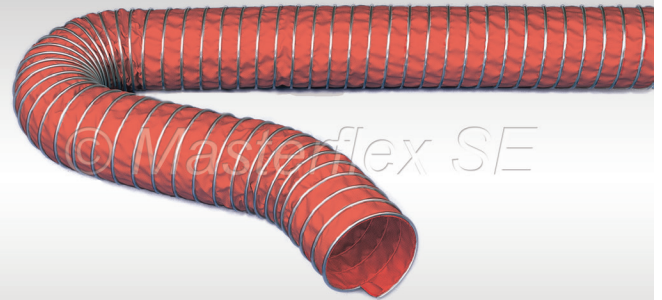
External helix: galvanized steel

### Applications

- Exhaust fume extraction from high performance test beds in the motor vehicle industries
- Diesel exhaust
- Automotive manufacturing
- Aircraft manufacturing
- Furnace construction
- Iron and steel works
- Infrared dryer plants
- Shipbuilding industry
- Defense industry
- General engineering
- Suction plants
- Radiant heat protection
- Primarily suited as extraction hose

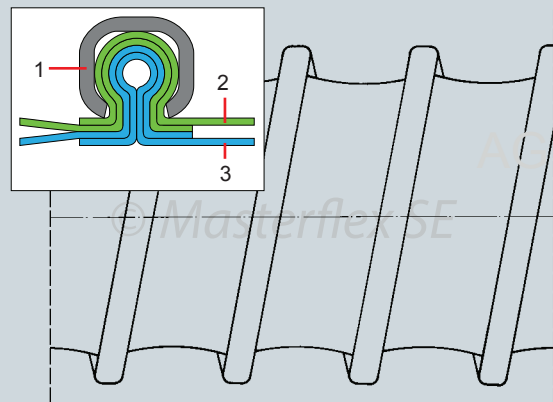
### Properties

- Flame-resistant
- Very high temperature resistance
- Silicone-free
- Highly flexible
- Extreme compressibility 1:6
- Small bend radius
- Improved vacuum resistance by woven in reinforcement
- External steel helix protects against abrasion
- Suitable for continually flexing
- Special clamping method guarantees high tensile strength between hose material and external helix
- To maximize life of duct and exhaust system effectiveness, it is recommended to utilize a negative pressure exhaust system and introduce ambient air at the inlet.



### Construction

1. External helix
2. Outer wall: special coated high temperature fabric
3. Inner wall: heat resistant fabric



### Temperature Range

- -5°F up to +1200°F
- Intermittent to +1300°F  
Small amounts of smoke maybe given off when used under positive pressure or with low extraction rates.

# Master-Clip HT 1200

Dia (in.)	Positive (in. w.c.)	Negative (in. w.c.)	*Bending radius (in.)	Weight (lbs./ft.)	Product Code
2.00	362	158	1.20	0.64	229-050-119
2.50	251	120	1.56	0.73	229-060-119
3.00	201	102	1.80	0.83	229-075-119
3.50	161	84	2.16	0.94	229-090-119
4.00	141	67	2.40	1.07	229-100-119
4.50	121	56	2.64	1.20	229-115-119
5.00	109	42	3.00	1.33	229-125-119
5.60	79	35	3.36	1.46	229-140-119
6.00	69	30	3.60	1.58	229-150-119
6.40	64	27	3.84	1.72	229-160-119
7.00	59	22	4.20	1.85	229-175-119
8.00	49	17	4.80	2.10	229-200-119
9.00	42	14	6.32	2.37	229-225-119
10.00	39	12	7.00	2.63	229-250-119
11.00	37	9	7.72	INQ	229-275-119
12.00	33	8	8.40	3.16	229-300-119
13.00	25	7	9.12	INQ	229-325-119
14.00	20	6	9.80	3.67	229-350-119
15.00	16	5	10.52	INQ	229-375-119
16.00	16	4	11.20	4.26	229-400-119
18.00	12	4	14.40	4.94	229-450-119
20.00	11	3	16.00	5.72	229-500-119
22.00	10	2	17.60	INQ	229-550-119
24.00	8	2	19.20	6.65	229-600-119
28.00	6	2	22.40	7.71	229-700-119
32.00	5	1	25.60	8.95	229-800-119
36.00	4	1	28.80	10.38	229-900-119

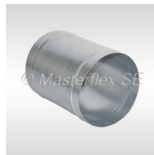
\*Referring to the inner side of the elbow of hose.

The above mentioned data refers to an average and ambient temperature of 68° F. Subject to technical changes and color variations. Please refer to technical data sheet when selecting hose.

## Installation and connection possibilities



Car-Grip hose clamp, screwable



Hose connector



Hose reducer, symmetrical

Masterduct, Inc.  
5235 Ted Street  
Houston, TX 77040  
USA  
Tel. +1.713.462.5779  
Tel. +1.800.318.3300  
Fax + 1.713.939.8441  
www.masterduct.com

## Standard Production

- Diameter: 2" to 36"
- Color: red
- Standard lengths: 25'

## Available on Request

- Special lengths
- Custom design with other pitches and helix sizes
- External helix also in stainless steel
- Special diameters metric