

# GENERAL PURPOSE VENTILATION HOSE FOR TEMPERATURES UP TO +300°F

## Master-Clip NEOPRENE H

### Material

Hose wall: Heavier coated neoprene polyester fabric  
External helix: galvanized steel

### Applications

- Transfer of hot or cold air
- Air-conditioning/ventilation systems
- Automotive manufacturing
- Engine manufacturing
- Exhaust fumes equipment
- Extraction of corrosive media
- Chemical industry
- Higher Vacuum applications

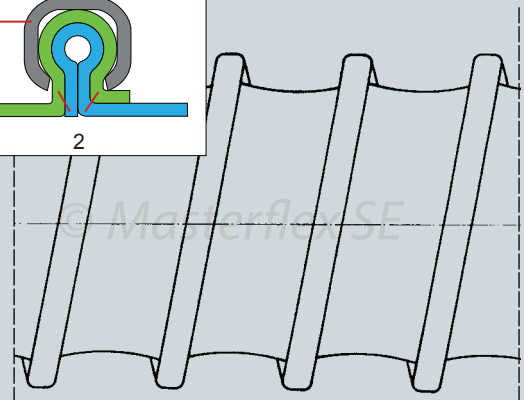
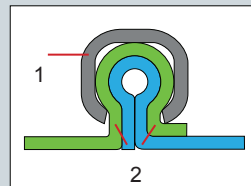
### Properties

- Flame-resistant to FTM 5903 criteria
- Improved temperature resistance
- Highly flexible
- Extreme compressibility 1:6
- Small bend radius
- Vibration-proof
- Good chemical resistance
- External steel helix protects against abrasion



### Construction

1. External helix
2. Hose wall: heavier coated neoprene polyester fabric



### Temperature Range

- -30°F up to +300°F
- Intermittent to +350°F
- When used in exhaust gas systems, gas funnels should be used properly and enough fresh air should be utilized

### Chem. Resistance

See resistance table

# Master-Clip NEOPRENE H

| Dia (in.) | Positive (in. w.c.) | Negative (in. w.c.) | *Bending radius (in.) | Weight (lbs./ft.) | Product Code |
|-----------|---------------------|---------------------|-----------------------|-------------------|--------------|
| 2.00      | 362                 | 176                 | 1.20                  | 0.3355            | 234-050-107  |
| 2.50      | 273                 | 95                  | 1.56                  | 0.4697            | 234-063-107  |
| 3.00      | 249                 | 78                  | 1.80                  | 0.5368            | 234-075-107  |
| 3.50      | 225                 | 54                  | 2.16                  | 0.6039            | 234-090-107  |
| 4.00      | 205                 | 44                  | 2.40                  | 0.6710            | 234-100-107  |
| 4.50      | 193                 | 37                  | 2.64                  | 0.7381            | 234-115-107  |
| 5.00      | 133                 | 28                  | 3.00                  | 0.8052            | 234-125-107  |
| 5.60      | 100                 | 23                  | 3.36                  | 0.8723            | 234-140-107  |
| 6.00      | 88                  | 20                  | 3.60                  | 0.8723            | 234-150-107  |
| 6.40      | 84                  | 17                  | 3.84                  | 0.8723            | 234-160-107  |
| 7.00      | 74                  | 15                  | 4.20                  | 0.9394            | 234-175-107  |
| 8.00      | 59                  | 11                  | 4.80                  | 1.0736            | 234-200-107  |
| 9.00      | 46                  | 9                   | 6.32                  | 1.3420            | 234-225-107  |
| 10.00     | 40                  | 7                   | 7.00                  | 1.4091            | 234-250-107  |
| 11.00     | 32                  | 6                   | 7.72                  | 1.5433            | 234-275-107  |
| 12.00     | 28                  | 5                   | 8.40                  | 1.6104            | 234-300-107  |
| 13.00     | 24                  | 4                   | 9.12                  | 1.8788            | 234-325-107  |
| 14.00     | 23                  | 4                   | 9.80                  | 2.2143            | 234-350-107  |
| 15.00     | 20                  | 3                   | 10.52                 | 2.3485            | 234-375-107  |
| 16.00     | 19                  | 3                   | 11.20                 | 2.5498            | 234-400-107  |
| 18.00     | 18                  | 2                   | 14.40                 | 2.8182            | 234-450-107  |
| 20.00     | 17                  | 2                   | 16.00                 | 3.1537            | 234-500-107  |
| 22.00     | 17                  | 2                   | 17.60                 | 3.5563            | 234-550-107  |
| 24.00     | 16                  | 1                   | 19.20                 | 3.9589            | 234-600-107  |
| 28.00     | 12                  | 1                   | 22.40                 | 4.6299            | 234-700-107  |
| 32.00     | 9                   | 1                   | 25.60                 | 5.0996            | 234-800-107  |
| 36.00     | 6                   | 1                   | 28.80                 | 5.5022            | 234-900-107  |

\*Referring to the inner side of the elbow of hose.

The above mentioned data refers to an average and ambient temperature of 68o F. Subject to technical changes and color variations. Please refer to technical data sheet when selecting hose.

## Standard Production

- Diameter: 2" to 36"
- Color: black
- Standard lengths: 25'

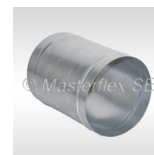
## Available on Request

- Special lengths
- Custom design with other pitches and helix sizes
- External helix also in stainless steel
- Special diameters metric

## Installation and connection possibilities



Master-grip hose clamp, screwable



Hose connector



Hose reducer, symmetrical

Masterduct, Inc.  
5235 Ted Street  
Houston, TX 77040  
USA  
Tel. +1.713.462.5779  
Tel. +1.800.318.3300  
Fax + 1.713.939.8441  
www.masterduct.com

 **MASTERDUCT**  
Connecting Values