

SUCTION AND BLOWER HOSE FOR AIR-CONDITIONING/VENTILATION

Master-Clip Vinyl A

Material

Hose wall: PVC coated polyester fabric
Spiral: galvanized steel

Applications

- Air-conditioning/ventilation systems
- Exhaust equipment
- Air supply and extraction
- Low pressure applications
- Areas with raised safety requirements

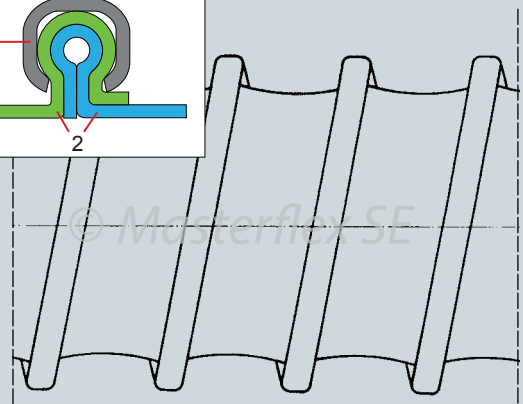
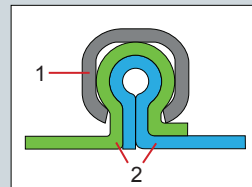
Properties

- **Antistatic, surface resistance $R_o < 10^8$**
- Good resistance to mechanical damage
- Extra strength outer hose wall
- Highly flexible
- Extreme compressibility 1:6
- Small bend radius
- Lightweight
- External steel helix protects against abrasion
- Special clamping method guarantees high tensile strength between hose material and external helix



Construction

1. External helix
2. Hose wall: PVC-coated polyester fabric



Temperature Range

- -5°F up to +160°F
- Intermittent to +175°F

Chem. Resistance

See resistance table

Master-Clip Vinyl A

Dia (in.)	Positive (in. w.c.)	Negative (in. w.c.)	*Bending radius (in.)	Weight (lbs./ft.)	Product Code
1.60	374	144	0.96	0.2684	211-040-302
1.80	370	136	1.08	0.2684	211-045-302
2.00	362	128	1.20	0.2684	211-050-302
2.20	342	106	1.32	0.2684	211-055-302
2.40	313	89	1.44	0.3355	211-060-302
2.60	273	76	1.56	0.3355	211-065-302
2.80	269	64	1.68	0.3355	211-070-302
3.00	249	56	1.80	0.4026	211-075-302
3.20	245	50	1.92	0.4026	211-080-302
3.60	225	40	2.16	0.4026	211-090-302
4.00	205	32	2.40	0.4026	211-100-302
4.40	193	26	2.64	0.4697	211-110-302
4.80	145	22	2.88	0.4697	211-120-302
5.00	133	20	3.00	0.5368	211-125-302
5.20	113	19	3.12	0.5368	211-130-302
5.60	100	16	3.36	0.5368	211-140-302
6.00	88	14	3.60	0.6039	211-150-302
6.40	84	12	3.84	0.6039	211-160-302
6.80	76	11	4.08	0.6039	211-170-302
7.00	74	10	4.20	0.6710	211-175-302
7.20	69	10	4.32	0.6710	211-180-302
8.00	59	8	4.80	0.8052	211-200-302
8.60	51	7	6.04	0.8723	211-215-302
9.00	46	6	6.32	0.9394	211-225-302
10.00	40	5	7.00	1.0736	211-250-302
11.00	32	4	7.72	1.2749	211-275-302
12.00	28	4	8.40	1.4091	211-300-302
12.60	25	3	8.84	1.4091	211-315-302
13.00	24	3	9.12	1.4762	211-325-302
14.00	23	3	9.80	1.6775	211-350-302
15.00	20	2	10.52	1.9459	211-375-302
16.00	19	2	11.20	2.0801	211-400-302
18.00	18	2	14.40	2.4156	211-450-302
20.00	17	1	16.00	2.8182	211-500-302
22.00	17	1	17.60	3.0866	211-550-302
24.00	16	1	19.20	3.4221	211-600-302
28.00	12	1	22.40	4.0260	211-700-302
32.00	9	1	25.00	4.6299	211-800-302
36.00	6	1	28.80	5.2338	211-900-302

*Referring to the inner side of the elbow of hose.

The above mentioned data refers to an average and ambient temperature of 68° F. Subject to technical changes and color variations. Please refer to technical data sheet when selecting hose.

Standard Production

- Diameter: 1.6" to 36"
- Color: grey
- Standard lengths: 25'

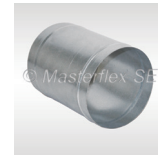
Available on Request

- Special lengths up to 50'
- Custom design with other pitches and helix sizes
- External helix also in stainless steel
- Special diameters metric

Installation and connection possibilities



Clip-Grip special hose clamp



Hose connector



Hose reducer, symmetrical

Masterduct, Inc.
5235 Ted Street
Houston, TX 77040
USA
Tel. +1.713.462.5779
Tel. +1.800.318.3300
Fax + 1.713.939.8441
www.masterduct.com

 **MASTERDUCT**
Connecting Values