

Master-Clip Thermo and Insulating Hoses

Material

Inner and outer hose type: standard hose of the Master-Clip range

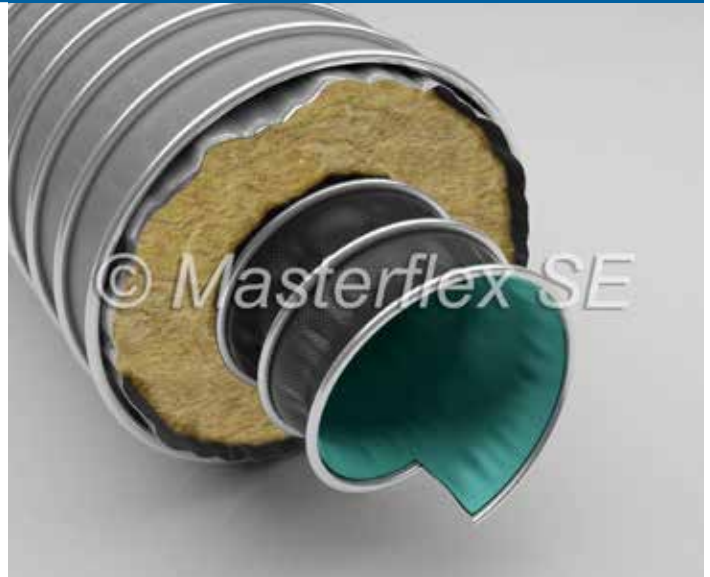
Insulation: asbestos-free insulation material

Applications

- Air conditioning/ventilation
- Radiant heat and cold protection
- Engine construction
- Vehicle construction

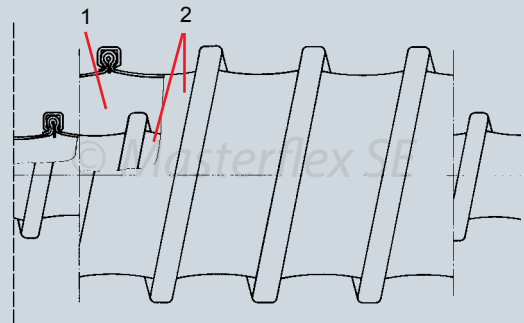
Properties

- Depending on the combination of the materials for the inner and outer hose type
- Reduced radiant heat
- Good sound proofing
- Flexible
- Special clamping method guarantees high tensile strength between hose material and external helix



Construction

1. Insulation: asbestos-free, insulation material
2. Inner and outer hose type: customers individual hose combination with standard hoses of the Master-Clip range



Temperature Range*

- Depending on the combination of the materials for the inner and outer hose type

*Hoses used for vehicle exhaust extraction, or operating near maximum temperature, must be used within a properly designed fan system to avoid damaging the hose.

Master-Clip Thermo and Insulating Hoses

Dia (in.)	Positive (in. w.c.)	Negative (in. w.c.)	*Bending radius (in.)	Weight (lbs./ft.)	**Product Code				
4.0	Refer to technical data sheet of inner hose		Depending on construction conditions		280-100-xxx				
12.0									280-300-xxx

Standard Production

- Diameter: 4" to 12"
- Standard lengths: 10'

*Referring to the inner side of the elbow of hose.
 The above mentioned data refers to an average and ambient temperature of 68° F. Subject to technical changes and color variations. Please refer to technical data sheet when selecting hose.
 **End product code number dependent on construction type

Installation and connection possibilities



Clip-Grip hose clamp

Hose connector

Hose reducer, symmetrical

Masterduct, Inc.
 5235 Ted Street
 Houston, TX 77040 USA
 Tel. +1 713 462-5779
 Tel. +1 800 318-3300
 Fax +1 713 939-8441
 www.Masterduct.com

