



Masterduct Product Guide

High-Tech Hoses & Connection Systems

 **MASTERDUCT**
Connecting Values



Five good reasons why you should be a Masterduct customer

About Masterduct

As part of the globally operating corporate group, The Masterflex Group, Masterduct specializes in solving complex connection challenges. We have over 25 years worth of experience in the development, manufacturing and processing of high-tech spiral hoses. Our in-depth material and technological expertise help us turn the most sophisticated high-performance plastics into real products, which set international standards. Our core values determine our work philosophy and connect us directly with the whole group.

Masterduct – Connecting Values

1 What makes us special

Customized hose solutions or products from stock? Whatever you require, we have the right products for your application. We solve connection tasks using high-tech plastics and technically sophisticated fabrics. Here lie our expertise and our passion. We offer added value for our customers with our many years of experience in the field of polymer materials, technically sophisticated fabrics and their processing. From the first on-site consultation and the status analysis through to the development and production of the suitable products - we're there to support you throughout the whole process with our innovative complete solutions.

Custom-made & all from one supplier.

2 Why you can always count on us

You can always rely on the constantly high quality of our products. Our products meet even the most stringent of national and international standards. This is a basic demand we place on ourselves. Whether heat, cold, extreme conditions or exposure to chemicals, our products prove themselves through their incredible durability and the long-lasting safety they bring. No matter how good our products are now, we are always working on newer and better ones for the future.

Your satisfaction is our greatest success.

3 We make it possible for you

We are as flexible as the very materials we use. We tackle any challenge because extraordinary tasks require extraordinary solutions. And that's exactly what we offer. With our in-depth specialist know-how, we develop customized product solutions for your specific application situation. You need a product quickly, require an unusual combination of materials or a delivery "just in time"? With our quick reaction and delivery times, we're the perfect partner for you:

Because in our business, reliable connections mean much more.

4 We're there where you need us

We develop sophisticated and customized products with greater customer benefits. For this reason, our highly experienced sales team is spread worldwide, nearer to wherever you need us. As a fundamentally strong development partner, we have our eye on the market and develop cutting-edge solutions for your specific tasks. At all of our locations throughout the world, our products are manufactured by our renowned German Engineering. This guarantees high quality, short distances, quick reaction times and the direct connection to you, the customer.

Consultation-oriented, personal, quick & expert - that makes the difference!

5 Quality, which speaks for itself

Visionary ideas drive us forwards and are the source of our own product developments and innovations. Our creations are produced with renowned German Engineering expertise. Our Sales, Engineering and Production Teams work seamlessly to provide you with the best results. This guarantees international quality standards, worldwide. Whatever we do, we always take great care of the environment. Resource-conserving processes and sustainability are our contribution to the environment.

Products & Services from Masterduct - we create values ...and connect them!

Contents

1	Key Industries & Applications	4
2	Dust Collection & Material Handling Hoses	6
3	Food & Pharmaceutical Hoses	9
4	Antistatic & Electrically Conductive Hoses	11
5	Air-Conditioning, Ventilation & Welding Fumes Hoses	13
6	Exhaust Fume Hoses	16
7	Chemical-Resistant Hoses	20
8	Specialty Hoses	23
9	Pneumatic Tubing & Profiles	24
10	Master-Lock Metal Duct	25
11	Installation & Connections	26
12	MASTERDUCT Terms & Conditions	28
13	Chemical Resistance Chart	30
14	Locations Worldwide	31



1

Key Industries & Applications

Suction and Transport Hoses

- Plastics Industry: granules transport, air ducting, granule suction
- Chemical Industry: delivery of chemicals, air ducting, chemical suction
- Textile Industry: equipment hoses
- Material Handling: bulk material conveyors
- Vacuum Industry: vacuum cleaners, vacuum conduits
- Computer Industry: clean rooms
- Concrete Industry: sand and gravel suction, concrete pouring
- Sewer and Waste Industry: dust removal, air duct cleaning, street sweepers, suction equipment
- Mining Industry: gravel and rock suction, breathing hoses, rock quarries
- Agricultural Industry: grain transport
- Glass Manufacturing: glass extraction, glass wool extraction
- Oil and Gas Industry: fume extraction
- General Manufacturing: exhaust, blower hoses, ventilation, protection against mechanical pressure
- Electrically Conductive Applications: oil spray extraction, gaseous and liquid media extraction
- Dust Collection: manufacturing facilities
- Pharmaceutical and Food Industries: FDA approved conveying of drugs, food (Food Grade)

Flame Resistant Suction and Transport Hoses

- Woodworking Industry: woodworking equipment, chip exhaust, dust collecting and removal, protection hoses
- Exhaustion Plants

Microbe Resistant Suction and Transport Hoses

- Landscape Industry: lawnmowers, grass collectors and sweepers, leaf collectors
- Agricultural Industry: feed transport, grain transport
- Cleaning Industry: cleaning apparatus (ducts)

Exhaust/Intake Gas Hoses

- Automotive Industry: engine testing(smog, performance), construction, diesel engines
- Aircraft Industry: engine testing
- Military: tanks, aircraft(engines)
- Marine: shipbuilding(engines)
- Steel and Wire Manufacturing: exhaust hoses

Suction and Blower Hoses

- HVAC Industry: air conditioning and ventilation systems (temporary applications)
- Manufacturing: exhaust systems
- Outdoor Entertainment: tent HVAC
- Welding Industry: welding and soldering fumes
- Suction Plants
- Insulation Industry: insulation blowers

Medium and High Temperature Hoses

- Chemical Industry: chemical plants
- Automotive Industry: engine construction, diesel fume exhaust
- Plastics Industry: granule dryers
- Paint Industry: paint spray extraction
- Iron and Steel Manufacturing: heat and fume extraction
- Aircraft Industry: engine exhaust
- Shipbuilding: engine fume exhaust
- Heat Treating: air and fume exhaust
- Extreme Heat and Pressure Applications
- Oil and Gas Industry: fume extraction
- Furnace Manufacturing: hot air extraction
- Boiler Manufacturing: high temperature exhaust
- Chemical Hoses
- Chemical Industry: dryers, fume extraction
- Paint Industry: paint spray and solvent extraction
- Wood and Paper Industries: fume exhaust
- Pharmaceutical Industry: fume extraction

Electrically Conductive Hoses

- Wood and Paper Industries: suction and transport of paper, wood chips
- Vacuum Cleaning Industry: industrial vacuums
- Explosive Gas Extraction
- Paint Industry: solvent fume extraction

Typical Product Applications Chart

Polyurethane, TPR, PUR GOLD		Medium and Hi Temperature, Chemical Fume	
Application	Hose Type	Application	Hose Type
Cable protection	Master PUR STEP, TPR PLUS	Air conditioning	Master Clip VINYL, PE
Cement, concrete	Master PUR H, HH, Performance	Air suction	Master Clip VINYL, PE
Dust collection	Master PUR SL, L, H, STEP	Air ventilation	Master Clip VINYL, NEOPRENE, PE
Electrically conductive	Master PUR EC hoses	Aircraft engine exhaust	Master Clip HT 1200, 1500, 2010
Flame retardant	Master PUR hoses	Boiler exhaust	Master Clip HT 1000, 1200
Flour	Master PUR H, HH	Building heating	Master Clip PE, NEOPRENE, Acrylic
Food (dry)	Master PUR hoses	Chemical fumes	Master Clip PTFE, HYPALON®, VITON®, NEOPRENE, KAPTAN®
Glass extraction	Master PUR H, Performance	Cool air movement	Master Clip VINYL, PE
Glass fibers	Master PUR L	Diesel exhaust	Carflex 570, Master Clip CAR, 750, 850
Grain	Master PUR H, HH	Dynamometer	Master Clip HT 850, 1000, 1200, 1500
Grease	Master PUR L	Electrically conductive conditions	Master Clip EC hoses
Grinding materials	Master PUR SL, L	Explosive conditions	Master Clip EC hoses
Industrial vacuums	Master PUR H	Furnace exhaust	Master Clip SILICONE, 750 thru 2010
Lawn mowers, collectors	Master PUR L	Heat treating	Master Clip SILICONE, 750 thru 2010
Metal chips, dust	Master PUR L, Performance	High temperature fume and exhaust	Master Clip SILICONE, 750 thru 2010
Microbe resistant	Master PUR (MR) hoses, Performance	Insulated hoses	Thermo Hose
Mining - rock and gravel	Master PUR H, HH, Performance	Insulation blowing	Master Clip PU, PUR STEP
Mulch blowing	Master PUR STEP	Lacquer fume extraction	Master Clip VITON®, PTFE
Oil mist	Master PUR SL, L	Military vehicles, tank exhaust	Master Clip 850, 1000, 1200, 1500
Paper	Master PUR L, H	Oil and gas fume extraction	Master Clip NEOPRENE, SILICONE
Pharmaceutical products	Master PUR STEP, PUR stainless hoses	Paint fumes	Master Clip VITON®, PTFE
Plastic pellets	Master PUR H, HH, Performance	Paper dryers	Master Clip HT 1000, 1200
Powder	Master PUR SL, L, H, STEP, Performance	Pharmaceutical fumes	See chemical chart for recommendations
Protection hoses	Master PUR L, H, STEP	Plastic pellet drying	Master SIL 2, TPR PLUS
Quarries	Master PUR H, Performance	Ship ventilation	Master Clip VINYL, EC
Rail-car loading, unloading	Master PUR HH, Performance	Steel mfg exhaust	Master Clip SILICONE, 750, 850, 1000, 1200
Robotics	Master PUR SL	Tent heating and ventilation	Master Clip NEOPRENE, PE
Seed, corn conveyance	Master PUR L, H	Vehicle exhaust	Carflex hoses, Hi-temp hoses
Sewer and waste	Master PUR L, STEP	Welding fumes	Master Clip SPARK, NEOPRENE
Silo discharge	Master PUR L, H, Performance		
Static dissipative	Master PUR, STEP, Performance		
Street cleaning	Master PUR L, H		
Sugar	Master PUR H, HH		
Tablets	Master PUR L-SS		
Textiles	Master PUR L		
Wood chips, sawdust	Master PUR SL, L, H, STEP		

2



Dust Collection & Material Handling Hoses

Abrasion-resistant dust collection & material handling hoses

Master-PUR SL-F



antistatic
flame-resistant
conforms to FDA food contact

PU Suction & Transport Hose, **super lightweight**, antistatic, $R_0 < 10^9$, flame-resistant, **highly flexible**, hose wall conforms to FDA, smooth inside for optimum flow

Applications

- Suction/transport of abrasive solids, paper fibers, granules, liquids, gases, rough-grained media with a high flow-rate, e.g. wood shavings & dust
- Oil mist extraction/suction
- Wet/dry process conveyance
- Food grade
- Pharmaceutical industry

Available in:

ID: 2" to 16"
Color: transparent
Standard length: to 25'
Wall thickness between spirals: .020"
Temperature Range
-22°F to +195°F
Intermittent to +260°F

Master-PUR L-F



antistatic
flame-resistant
conforms to FDA food contact

PU Suction & Transport Hose, **medium/lightweight**, antistatic, $R_0 < 10^9$, flame-resistant, **very flexible**, hose wall conforms to FDA, smooth inside for optimum flow

Applications

- Suction/transport of abrasive solids, paper fibers, granules, liquids, gases, rough-grained media with a high flow-rate, e.g. wood shavings & dust
- Oil mist extraction/suction
- Wet/dry process conveyance
- Food grade
- Pharmaceutical industry

Available in:

ID: 2" to 16"
Color: transparent
Standard length: to 25'
Wall thickness between spirals: .0275"
Temperature Range
-22°F to +195°F
Intermittent to +260°F

Master-PUR H-F



antistatic
flame-resistant
conforms to FDA food contact

PU Suction & Transport Hose, **heavyweight**, antistatic, $R_0 < 10^9$, flame-resistant, improved vacuum and pressure rating, **good flexibility**, hose wall conforms to FDA, smooth inside for optimum flow

Applications

- Suction/transport of abrasive solids, paper fibers, granules, liquids, gases, rough-grained media with a high flow-rate, e.g. wood shavings & dust
- Oil mist extraction/suction
- Wet/dry process conveyance
- Food grade
- Pharmaceutical industry

Available in:

ID: 2" to 16"
Color: transparent
Standard length: to 25'
Wall thickness between spirals: .055"
Temperature Range
-22°F to +195°F
Intermittent to +260°F

Use with Worm Gear Clamp.

Dust Collection & Material Handling Hoses

Master-PUR HH-F



antistatic
flame-resistant
conforms to FDA food contact

PU Suction & Transport Hose, **ultra heavyweight**, antistatic, $R_o < 10^9$, flame-resistant, high vacuum and pressure rating, **somewhat flexible**, hose wall conforms to FDA, smooth inside for optimum flow

Applications

- Suction/transport of abrasive solids, paper fibers, granules, liquids, gases, rough-grained media with a high flow-rate, e.g. wood shavings & dust
- Oil mist extraction/suction
- Wet/dry process conveyance
- Food grade
- Pharmaceutical industry

Use with Worm Gear Clamp.

Available in:

ID: 2" to 6"
Color: transparent
Standard length: to 25'
Wall thickness between spirals: .078"
Temperature Range
-22°F to +195°F
Intermittent to +260°F

Master-PUR L-X



Smoother
Inside!

antistatic
flame-resistant
conforms to FDA food contact

PU Suction & Transport Hose, **medium/lightweight**, antistatic, $R_o < 10^9$, flame-resistant, **very flexible**, hose wall conforms to FDA, smooth inside for optimum flow

Applications

- Suction/transport of abrasive solids, paper fibers, granules, liquids, gases, rough-grained media with a high flow-rate, e.g. wood shavings & dust
- Oil mist extraction/suction
- Wet/dry process conveyance
- Food grade
- Pharmaceutical industry

Available in:

ID: 1.0" to 10"
Color: transparent
Standard length: to 25'
Available in EC. Min. order quantity applies. Contact factory for details.
Wall thickness between spirals: .031"
Temperature Range
-22°F to +195°F
Intermittent to +260°F

Master-PUR H-X



Smoother
Inside!

antistatic
flame-resistant
conforms to FDA food contact

PU Suction & Transport Hose, **heavyweight**, antistatic, $R_o < 10^9$, flame-resistant, improved vacuum and pressure rating, **good flexibility**, hose wall conforms to FDA, smooth inside for optimum flow. Requires a worm gear clamp.

Applications

- Suction/transport of abrasive solids, paper fibers, granules, liquids, gases, rough-grained media with a high flow-rate, e.g. wood shavings & dust
- Oil mist extraction/suction
- Wet/dry process conveyance
- Food grade
- Pharmaceutical industry

Use with Worm Gear Clamp.

Available in:

ID: 1.2" to 8"
Color: transparent
Standard length: to 25'
Available in EC. Min. order quantity applies. Contact factory for details.
Wall thickness between spirals: .055"
Temperature Range
-22°F to +195°F
Intermittent to +260°F

Master-PUR HH-X



Smoother
Inside!

antistatic
flame-resistant
conforms to FDA food contact

PU Suction & Transport Hose, **ultra heavyweight**, antistatic, $R_o < 10^9$, flame-resistant, high vacuum and pressure rating, **somewhat flexible**, hose wall conforms to FDA, smooth inside for optimum flow. Requires a worm gear clamp.

Applications

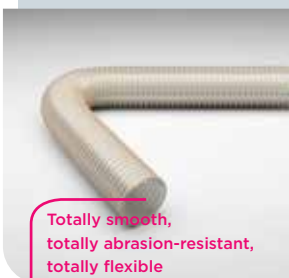
- Suction/transport of abrasive solids, paper fibers, granules, liquids, gases, rough-grained media with a high flow-rate, e.g. wood shavings & dust
- Oil mist extraction/suction
- Wet/dry process conveyance
- Food grade
- Pharmaceutical industry

Use with Worm Gear Clamp.

Available in:

ID: 1.2" to 4"
Color: transparent
Standard length: to 25'
Wall thickness between spirals: .078"
Temperature Range
-22°F to +195°F
Intermittent to +260°F

Master-PUR Performance



Totally smooth,
totally abrasion-resistant,
totally flexible

PU Suction & Transport Hose, extremely abrasion/vacuum-resistant, totally smooth inner lining, antistatic, $R_o < 10^9$, **microbe-resistant**

Applications

- Transport of problematic media, e.g. sand, gravel, grain, granules, as well as for conveyance, handling and loading plan
- Everywhere where easy-to-clean surfaces are required
- Suction/transport hose for extremely abrasive solid, liquid and gaseous media
- Transports of glass works, steelworks, quarries, shipyards, docks, flat-roof graveling, etc.

Available in:

ID: 1.5" to 6"
Color: transparent
Standard length: to 33'
Temperature Range
-22°F to +195°F
Intermittent to +260°F

Dust Collection & Material Handling Hoses

Master-PUR STEP



PU Film hose, antistatic, $R_o < 10^9$, flame-resistant, crush-resistant, hose wall conforms to FDA, highly flexible

Applications

- Suction & transport of abrasive solids, liquids and gases
- Ideal for floor-level areas where conventional hoses are subjected to rough conditions and can be permanently deformed
- Wood processing
- Protective hose

Available in:

ID: 2" to 6.4"
Color: hose wall clear with blue spiral
Wire: copper or stainless steel
Standard length: to 25'
Temperature Range
-22°F to +195°F
Intermittent to +260°F

Master-TPR PLUS



Suction & Transport Hose made with a thermoplastic elastomer reinforced fabric, lightweight, good chemical resistance to alkalis, acids and solvent gases, smooth inside for optimum flow

Applications

- Dust collection hose for the woodworking industry
- Fume extraction/welding arm
- Drying/plastics equipment
- Air-conditioning/ventilation systems
- Robotic arm covers
- Light material handling
- General purpose applications

Available in:

ID: 2" to 16"
Color: black
Standard length: to 25'
Temperature Range*
-60°F to +275°F
Intermittent to +300°F

Master-PUR H HT 250



PU Suction & Transport Hose with **higher temperature resistance** than standard PU hoses, **medium weight**, highly abrasive resistant, antistatic, $R_o < 10^9$, **good flexibility**, smooth inside for optimum flow

Applications

- Suction/transport of extremely abrasive solids, gases, liquids, warm fine-grained particles, e.g. dusts, powders & granulate
- Plastics processing
- Plant & mechanical engineering
- Print & paper manufacturing
- Oil mist extraction

Available in:

ID: 1.5" to 8"
Color: transparent
Standard length: to 25'
Wall thickness between spirals: .055"
Temperature Range
-22°F to +250°F
Intermittent to +300°F

*Hoses used for vehicle exhaust extraction, or operating near maximum temperature, must be used within a properly designed fan system to avoid damaging the hose. Smoke may be seen under positive pressure or with low extraction rates. Please consult your local representative for more details.

3



Food & Pharmaceutical Hoses

Hoses made from Polyester-Polyurethane and conform to FDA food contact, for almost any application in the Food & Pharmaceutical industries

Master-PUR SL-F-SS



antistatic
flame-resistant
conforms to FDA food contact

PU Suction & Transport Hose with stainless steel helix, **super lightweight**, antistatic, $R_o < 10^9$, flame-resistant, hose wall conforms to FDA, **highly flexible**, smooth inside for optimum flow

Applications

- Food industry
- Pharmaceutical industry
- Suction/transport hose for abrasive materials
- Clean room applications
- Gaseous and liquid media
- Transport of small particle dusts and powders
- Wet/dry process conveyance
- Stainless steel requirements

Available in:

ID: 2 to 16"
Color: transparent
Standard length: to 25'
Temperature Range
-22°F to +195°F
Intermittent to +260°F

Master-PUR L-F-SS



antistatic
flame-resistant
conforms to FDA food contact

PU Suction & Transport Hose with stainless steel helix, **medium/lightweight**, antistatic, $R_o < 10^9$, flame-resistant, hose wall conforms to FDA, **very flexible**, smooth inside for optimum flow

Applications

- Food industry
- Pharmaceutical industry
- Suction/transport hose for abrasive materials
- Clean room applications
- Gaseous and liquid media
- Transport of small particle dusts and powders
- Wet/dry process conveyance
- Stainless steel requirements

Available in:

ID: 1.5" to 16"
Color: transparent
Standard length: to 25'
Temperature Range
-22°F to +195°F
Intermittent to +260°F

Master-PUR H-F-SS



antistatic
flame-resistant
conforms to FDA food contact

PU Suction & Transport Hose with stainless steel helix, **heavyweight**, antistatic, $R_o < 10^9$, flame-resistant, hose wall conforms to FDA, **good flexibility**, smooth inside for optimum flow

Applications

- Food industry
- Pharmaceutical industry
- Suction/transport hose for abrasive materials
- Clean room applications
- Gaseous and liquid media
- Transport of small particle dusts and powders
- Wet/dry process conveyance
- Stainless steel requirements

Available in:

ID: 1.5" to 16"
Color: transparent
Standard length: 1.5" to 10" - 25'
11" to 16" - 10'
Temperature Range
-22°F to +195°F
Intermittent to +260°F

Food & Pharmaceutical Hoses

Master-PUR HH-F-SS



antistatic
flame-resistant
conforms to FDA food contact

PU Suction & Transport Hose with stainless steel helix, **ultra heavyweight**, antistatic, $R_0 < 10^9$, flame-resistant, hose wall conforms to FDA, **somewhat flexible**, smooth inside for optimum flow

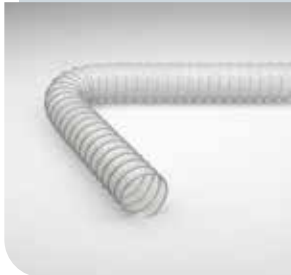
Applications

- Food industry
- Pharmaceutical industry
- Suction/transport hose for abrasive materials
- Clean room applications
- Gaseous and liquid media
- Transport of small particle dusts and powders
- Wet/dry process conveyance
- Stainless steel requirements

Available in:

ID: 2" to 6"
Color: transparent
Standard length: to 10'
Temperature Range
-22°F to +195°F
Intermittent to +260°F

Master-Clip PTFE-FG-SS



Suction & Transport Hose, laminated PTFE fabric, stainless steel helix, excellent chemical/weather resistance, good tear strength, hose wall non-stick material for optimum flow characteristics, highly flexible

Applications

- Suction/transport of abrasive solids, paper fibers, granules, liquids, gases, rough-grained media with a high flow-rate, e.g. wood shavings & dust
- Oil mist extraction/suction
- Wet/dry process conveyance
- Food grade
- Pharmaceutical industry
- Stainless steel requirements

Available in:

ID: 3" to 16"
Color: natural
Temperature Range
-290°F to +600°F

Master-PUR STEP



Crush-resistant

PU Film hose, antistatic, $R_0 < 10^9$, flame-resistant, crush-resistant, hose wall conforms to FDA, highly flexible

Applications

- Food industry
- Pharmaceutical industry
- Suction & transport of abrasive solids, liquids and gases
- Ideal for floor-level areas where conventional hoses are subjected to rough conditions and can be permanently deformed
- Protective hose

Available in:

ID: 2" to 6.4"
Color: hose wall clear with blue spiral
Standard length: to 25'
Temperature Range
-22°F to +195°F
Intermittent to +260°F

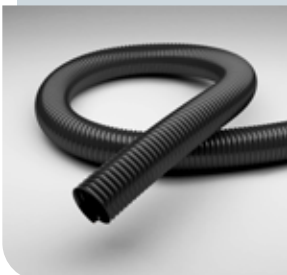
4



Antistatic & Electrically Conductive Hoses

For preventing danger of ignition through electrostatic charges

Master-PUR SL-F-EC



PU Suction & Transport Hose, **super lightweight**, electroconductive, $R_o < 10^4$, highly abrasion-resistant, improved pressure and vacuum characteristics, **highly flexible**, smooth inside for optimum flow

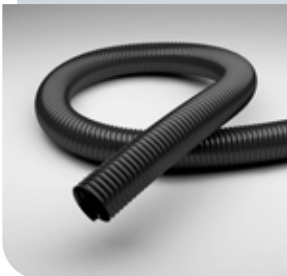
Applications

- Suction/extraction of paper & textile fibers
- Suction/transport of abrasive solids, liquids, gases and particles with high flow volume
- Oil mist extraction/suction
- Protective hose against mechanical wear
- Special hose for industrial vacuum cleaners
- Danger zones, which require electrically conductive hoses

Available in:

ID: 2" to 16"
Color: black
Standard length: to 25'
Temperature Range
-22°F to +195°F
Intermittent to +260°F

Master-PUR L-F-EC



PU Suction & Transport Hose, **medium/lightweight**, electroconductive, $R_o < 10^4$, highly abrasion-resistant, improved pressure and vacuum characteristics, **very flexible**, smooth inside for optimum flow

Applications

- Suction/extraction of paper & textile fibers
- Suction/transport of abrasive solids, liquids, gases and particles with high flow volume
- Oil mist extraction/suction
- Protective hose against mechanical wear
- Special hose for industrial vacuum cleaners
- Danger zones, which require electrically conductive hoses

Available in:

ID: 2" to 16"
Color: black
Standard length: to 25'
Temperature Range
-22°F to +195°F
Intermittent to +260°F

Master-PUR H-F-EC



PU Suction & Transport Hose, **heavyweight**, electroconductive, $R_o < 10^4$, highly abrasion-resistant, improved pressure and vacuum characteristics, **good flexibility**, smooth inside for optimum flow

Applications

- Suction/extraction of paper & textile fibers
- Suction/transport of abrasive solids, liquids, gases and particles with high flow volume
- Oil mist extraction/suction
- Protective hose against mechanical wear
- Special hose for industrial vacuum cleaners
- Danger zones, which require electrically conductive hoses

Available in:

ID: 2" to 16"
Color: black
Standard length: to 25'
Temperature Range
-22°F to +195°F
Intermittent to +260°F

Antistatic & Electrically Conductive Hoses

Master-Clip VINYL A



Suction & Blower Hose made from PVC-coated polyester fabric, antistatic, surface resistance, $R_0 < 10^9$

Applications

- For greater safety requirements
- Air-conditioning & ventilation systems
- Air supply & extraction
- Low pressure range
- Extractor units

Available in:

ID: 2.5" to 36"
Color: gray
Temperature Range
-5°F to +160°F
Intermittent to +175°F

Master-Clip VINYL EC



Suction & Blower Hose made from PVC-coated polyester fabric, electroconductive, $R_0 < 10^6$

Applications

- Danger zones, which require electrically conductive hoses
- Suction & conveyance of aggressive media, explosive gases & fumes
- Air supply & extraction in explosion-protected areas
- For greater mechanical demands
- Low pressure range
- Extractor units

Available in:

ID: 2.5" to 36"
Color: black
Temperature Range
-5°F to +160°F
Intermittent to +175°F

Master-Clip PTFE S-EC



Suction & Blower Hose for corrosive media up to +480°F, electroconductive, $R_0 < 10^6$

Applications

- Danger zones, which require electrically conductive hoses
- Suction & conveyance of aggressive media, explosive gases & fumes
- Paint mist extraction
- Paint, wood and paper industry
- Solvent extraction
- Pharmaceuticals industry
- Low pressure range
- Chemicals industry

Available in:

ID: 3" to 36"
Color: inside black, outside silver-gray
Temperature Range
-90°F to +480°F
Intermittent to +520°F

Master-Clip PTFE H-EC



Suction & Blower Hose for corrosive media up to +350°F, electroconductive, $R_0 < 10^6$

Applications

- Danger zones, which require electrically conductive hoses
- Suction & conveyance of aggressive media, explosive gases & fumes
- Paint mist extraction
- Paint, wood and paper industry
- Solvent extraction
- Pharmaceuticals industry
- Low pressure range
- Chemicals industry

Available in:

ID: 2.5" to 36"
Color: black
Temperature Range
-40°F to +350°F
Intermittent to +375°F

5



Air-Conditioning, Ventilation & Welding Fumes Hoses

Air supply & ventilation in air-conditioning technology & extractor units

Master-Clip PE



Suction & Blower
Hose made from an
Polyethylene fabric,
environmentally friendly

Applications

- Air-conditioning & ventilation systems
- Air supply & extraction
- Vacuum devices for asbestos removal
- Low pressure range
- Extractor units

Available in:

ID: 2.5" to 36"
Color: transparent
Temperature Range
-40°F to +185°F
Intermittent to +260°F

Master-Clip VINYL A



Suction & Blower
Hose made from
PVC-coated polyester
fabric, antistatic, $R_o < 10^8$

Applications

- For greater safety requirements
- Air-conditioning & ventilation systems
- Air supply & extraction
- Low pressure range
- Extractor units

Available in:

ID: 2.5" to 36"
Color: gray
Temperature Range
-5°F to +160°F
Intermittent to +175°F

Air-Conditioning, Ventilation & Welding Fumes Hoses

Master-Clip VINYL B



Suction & Blower
Hose made from
PVC-coated
Polyester fabric,
hardly inflammable

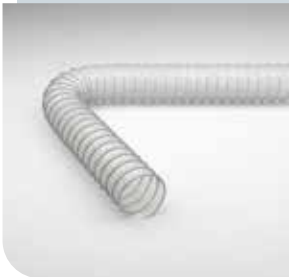
Applications

- Air-conditioning & ventilation systems
- Air supply & extraction
- Tent ventilation
- Solder fume extraction
- Low pressure range
- Extractor units

Available in:

ID: 2.5" to 36"
Color: yellow
Temperature Range
-5°F to +160°F
Intermittent to +175°F

Master-Clip PUR



Suction & Blower
Hose made from
PU film/foil, extremely
abrasion-proof

Applications

- Suction/extraction of abrasive solids
- Air-conditioning & ventilation systems
- Low pressure range

Available in:

ID: 2.5" to 36"
Color: transparent
Temperature Range
-40°F to +195°F

Master-NEO 2



Medium & high
temperature hose
up to + 300°F
double-layered

Applications

- Chemicals industry
- Conveyance of air & gaseous media with high nominal and ambient temperatures
- Hot air hose for granulate dryer
- Machine & engine manufacturing
- Shipbuilding
- Plastic processing industry
- Waste incineration plants
- Automotive & aircraft manufacturing

Available in:

ID: 2" to 12"
Color: black
Standard length: 13'
Temperature Range*
-65°F to +300°F

Hose can't be bonded.

Master-SIL 2



Medium & high
temperature hose
up to +600°F,
double-layered

Applications

- Chemicals industry
- Conveyance of air & gaseous media with high nominal and ambient temperatures
- Hot air hose for granulate dryer
- Machine & engine manufacturing
- Shipbuilding
- Plastic processing industry
- Waste incineration plants
- Automotive & aircraft manufacturing

Available in:

ID: 1" to 12"
Color: orange
Standard length: 13' (1"-12" dia),
20' (2", 2.5", 3", 4", 5", 6", 8" dia)
Temperature Range*
-75°F to +600°F

Master-TPR PLUS



Suction & Transport Hose
made with a thermoplastic
elastomer reinforced fabric,
lightweight, good chemical
resistance to alkalies, acids
and solvent gases, smooth
inside for optimum flow

Applications

- Dust collection hose for the woodworking industry
- Fume extraction/welding arm
- Drying/plastics equipment
- Air-conditioning/ventilation systems
- Robotic arm covers
- Light material handling
- General purpose applications

Available in:

ID: 2" to 16"
Color: black
Standard length: to 25'
Temperature Range*
-60°F to +275°F
Intermittent to +300°F

*Hoses used for vehicle exhaust extraction, or operating near maximum temperature, must be used within a properly designed fan system to avoid damaging the hose. Smoke may be seen under positive pressure or with low extraction rates. Please consult your local representative for more details.

Air-Conditioning, Ventilation & Welding Fumes Hoses

Master-Clip Fume Duct



A light, flame retardant PVC-coated fabric, mechanically locked without adhesives

Applications

- Welding industry
- Cutting
- Gases
- Grinding
- Pharmaceutical dust
- Plasma cutting
- Laboratory applications
- Chemical fumes

Available in:

ID: 4" to 12"
Color: blue or black
Temperature Range
-5°F up to +195°F
Intermittent to +230°F

Master-Clip SPARK



Special hose for welding fumes extraction, made from PVC-coated glass fabric

Applications

- Suction/extraction of abrasive solids
- Filling plants
- Welding industry
- Plasma cutting
- Low pressure range

Available in:

ID: 2.5" to 36"
Color: gray
Temperature Range*
-5°F to +195°F
Intermittent to +230°F

Master-Clip NEOPRENE



Medium & high temperature hose up to +300°F, Neoprene-coated fabric, flame-resistant to UL94, UL214 criteria

Applications

- Air-conditioning & ventilation systems
- Engine manufacturing
- Exhaust gas extraction
- Suction/extraction of aggressive media
- Transport of hot & cold air
- Automotive manufacturing
- Welding industry
- Low pressure range
- Chemicals industry

Available in:

ID: 2.5" to 36"
Color: black
Temperature Range*
-30°F to +300°F
Intermittent to +375°F

Master-Clip NEOPRENE H



Medium & high temperature hose up to +300°F, heavier coated Neoprene-coated fabric

Applications

- Air-conditioning & ventilation systems
- Engine manufacturing
- Exhaust gas extraction
- Suction/extraction of aggressive media
- Transport of hot & cold air
- Automotive manufacturing
- Higher vacuum applications
- Welding industry
- Low pressure range
- Chemicals industry

Available in:

ID: 2.5" to 36"
Color: black
Temperature Range*
-30°F to +300°F
Intermittent to +350°F

*Hoses used for vehicle exhaust extraction, or operating near maximum temperature, must be used within a properly designed fan system to avoid damaging the hose. Smoke may be seen under positive pressure or with low extraction rates. Please consult your local representative for more details.

6



Exhaust Fume Hoses

Hoses for suction/extraction of exhaust fumes from combustion engines at high temperatures

Carflex Super



Exhaust hose for exhaust fumes/gases up to +300°F, super lightweight, crush-resistant

Applications

- Suction/extraction of engine exhaust fumes up to max. +300°F
- Permanently rollover-proof exhaust hose
- Medium wear during extraction of petrol & diesel engine exhaust fumes
- Used on exhaust systems, such as:
 - Suction Rail Systems
 - Upper/Lower Floor Systems
 - Stationary Systems

Available in:

ID: 2.5" to 6"
Color: hose wall black, red spiral
Temperature Range*
Exhaust gas temperatures up to +300°F

Master-Clip NEOPRENE



Medium & high temperature hose up to +300°F, Neoprene-coated fabric

Applications

- Air-conditioning & ventilation systems
- Engine manufacturing
- Exhaust gas extraction
- Suction/extraction of aggressive media
- Transport of hot & cold air
- Automotive manufacturing
- Welding industry
- Low pressure range
- Chemicals industry

Available in:

ID: 2.5" to 36"
Color: black
Temperature Range*
-30°F to +300°F
Intermittent to +375°F

Carflex 350



Exhaust gas hose for exhaust fumes/gases up to +350°F

Applications

- Suction/extraction of engine exhaust fumes up to max. +350°F
- Light to medium wear during extraction of petrol & diesel engine exhaust fumes
- All conventional exhaust systems, such as:
 - Exhaust Hose Reels
 - Suction Rail Systems
 - Upper/Lower Floor Systems
 - Stationary Systems

Available in:

ID: 3" to 8"
Color: black, blue outer abrasion protector
Temperature Range*
Exhaust gas temperatures up to +350°F

*Hoses used for vehicle exhaust extraction, or operating near maximum temperature, must be used within a properly designed fan system to avoid damaging the hose. Smoke may be seen under positive pressure or with low extraction rates. Please consult your local representative for more details.

Exhaust Gas Hoses

Carflex CF



Exhaust gas hose for exhaust fumes/gases up to +570°F, double-layered

Applications

- Suction/extraction of engine exhaust fumes up to max. +570°F
- High stress during extraction of petrol & diesel engine exhaust fumes
- All conventional exhaust systems, such as:
 - Exhaust Hose Reel
 - Suction Rail System
 - Upper/Lower Floor Systems
 - Stationary Systems

Available in:

ID: 3" to 12"
Color: hose wall black, outer abrasion protector red
Temperature Range*
Exhaust gas temperatures up to +570°F

Carflex 570



Exhaust gas hose for exhaust fumes/gases up to +570°F

Applications

- Suction/extraction of engine exhaust fumes up to max. +570°F
- High stress during extraction of petrol & diesel engine exhaust fumes
- All conventional exhaust systems, such as:
 - Exhaust Hose Reel
 - Suction Rail System
 - Upper/Lower Floor Systems
 - Stationary Systems

Available in:

ID: 3" to 12"
Color: hose wall green-gray, outer abrasion protector red
Temperature Range*
Exhaust gas temperatures up to +570°F
Intermittent to +660°F

Master-Clip CAR



Medium & high temperature hose up to +570°F

Applications

- Machine manufacturing
- Automotive manufacturing
- Low pressure range
- Extractor units
- Exhaust extraction (engine manufacturing)
- Hot air
- Smoke extractors
- Defense systems
- Aircraft manufacturing

Available in:

ID: 2.5" to 36"
Color: inside black, outside green
Temperature Range*
-75°F to +570°F
Intermittent to +660°F

Master-Clip ISO CAR



Medium & high temperature hose up to +570°F, double-layered

Applications

- Diesel engine test-benches with higher
- Extraction performance
- Machine manufacturing
- Automotive manufacturing
- Low pressure range
- Extractor units
- Hot air
- Smoke extractors
- Defense systems
- Aircraft manufacturing

Available in:

ID: 2.5" to 36"
Color: silver-gray, outside green-gray
Temperature Range*
-75°F to +570°F
Intermittent to +660°F

Master-Clip SILICONE



Medium & high temperature hose up to +570°F

Applications

- Engine manufacturing
- Hot & cold air conveyance
- Machine manufacturing
- Automotive manufacturing
- Low pressure range
- Extractor units
- Defense systems
- Aircraft manufacturing

Available in:

ID: 2.5" to 36"
Color: silver-gray
Temperature Range*
-75°F to +570°F
Intermittent to +625°F

*Hoses used for vehicle exhaust extraction, or operating near maximum temperature, must be used within a properly designed fan system to avoid damaging the hose. Smoke may be seen under positive pressure or with low extraction rates. Please consult your local representative for more details.

Exhaust Gas Hoses

Master-Clip SILICONE H



Medium & high temperature hose up to +570°F

Applications

- Engine and machine manufacturing
- Hot & cold air conveyance
- Automotive manufacturing
- Low pressure range
- Extractor units
- Defense systems
- Aircraft manufacturing
- Especially recommended for diesel applications due to heavier coating than Master-Clip Silicone

Available in:

ID: 3" to 36"
Color: blue
Temperature Range*
-75°F to +570°F
Intermittent to +625°F

Master-Clip ISO-SILICONE



Medium & high temperature hose up to +570°F, double-layered

Applications

- Engine manufacturing
- Hot & cold air conveyance
- Extractor units with greater suction performance
- Automotive manufacturing
- Low pressure range
- Defense systems
- Aircraft manufacturing

Available in:

ID: 2.5" to 36"
Color: silver-gray
Temperature Range*
-75°F to +570°F
Intermittent to +625°F

Master-SIL 2



Medium & high temperature hose up to +600°F, double-layered

Applications

- Chemicals industry
- Conveyance of air & gaseous media with high nominal and ambient temperatures
- Hot air hose for granulate dryer
- Machine & engine manufacturing
- Shipbuilding
- Plastic processing industry
- Waste incineration plants
- Automotive & aircraft manufacturing

Available in:

ID: 1" to 12"
Color: orange
Standard length:
13' (1"-12" dia), 20' (2", 2.5", 3", 4", 5", 6", 8" dia)
Temperature Range*
-75°F to +600°F

Master-SIL 2 NOMEX



Medium & high temperature hose up to +600°F, double-layered

Applications

- Chemicals industry
- Conveyance of air & gaseous media with high nominal and ambient temperatures
- Hot air hose for granulate dryer
- Machine & engine manufacturing
- Shipbuilding
- Plastic processing industry
- Waste incineration plants
- Automotive & aircraft manufacturing

Available in:

ID: 1" to 12"
Color: orange
Standard length:
13' (1"-12" dia), 20' (2", 2.5", 3", 4", 5", 6", 8" dia)
Temperature Range*
-75°F to +600°F
Intermittent to +660°F

Master-Clip HT 750



Medium & high temperature hose up to +750°F

Applications

- Suction plants
- Hot air conveyance
- Furnace construction
- Iron and steel works
- Engine manufacturing
- Radiant heat protection
- Primarily suited as extraction hose
- Low pressure applications

Available in:

ID: 2.5" to 36"
Color: inside silver, outside red
Temperature Range*
-5°F to +750°F
Intermittent to +840°F

*Hoses used for vehicle exhaust extraction, or operating near maximum temperature, must be used within a properly designed fan system to avoid damaging the hose. Smoke may be seen under positive pressure or with low extraction rates. Please consult your local representative for more details.

Exhaust Gas Hoses

Master-Clip HT 850

Medium & high temperature hose up to +850°F



Applications

- Vehicle exhaust systems, esp. diesel
- Suction plants
- Hot air conveyance
- Furnace construction
- Engine manufacturing
- All conventional exhaust systems, such as:
 - Exhaust Hose Reel
 - Suction Rail System
 - Upper/Lower Floor Systems
 - Stationary Systems

Available in:

ID: 2.5" to 36"
Color: orange
Temperature Range*
-5°F to +850°F
Intermittent to +950°F

Master-Clip HT 1000

Medium & high temperature hose up to +1000°F



Applications

- Suction plants
- Hot air conveyance
- Furnace construction
- Iron and steel works
- Engine manufacturing
- Radiant heat protection
- Primarily suited as extraction hose
- Low pressure applications

Available in:

ID: 2.5" to 36"
Color: silver
Temperature Range*
-5°F to +1000°F
Intermittent to +1100°F

Master-Clip HT 1200

Medium & high temperature hose up to +1200°F



Applications

- Oven manufacturing & heat protection
- Automotive, aircraft & shipbuilding industries
- Defense systems
- Mining & steel industry
- Exhaust gas extraction for high-performance engine test-benches in the automotive industry
- Exhaust gas extraction for larger engines
- Dynamometer testing

Available in:

ID: 3" to 36"
Color: red
Temperature Range*
-5°F to +1200°F
Intermittent to +1300°F

Master-Clip HT 1500

Medium & high temperature hose up to +1500°F



Applications

- Oven manufacturing & heat protection
- Automotive, aircraft & shipbuilding industries
- Defense systems
- Mining & steel industry
- Exhaust gas extraction for high-performance engine test-benches in the automotive industry
- Exhaust gas extraction for larger engines

Available in:

ID: 3" to 36"
Color: silver
Temperature Range*
-5°F to +1500°F
Intermittent to +1680°F

Master-Clip HT 2010

Medium & high temperature hose up to +2010°F



Applications

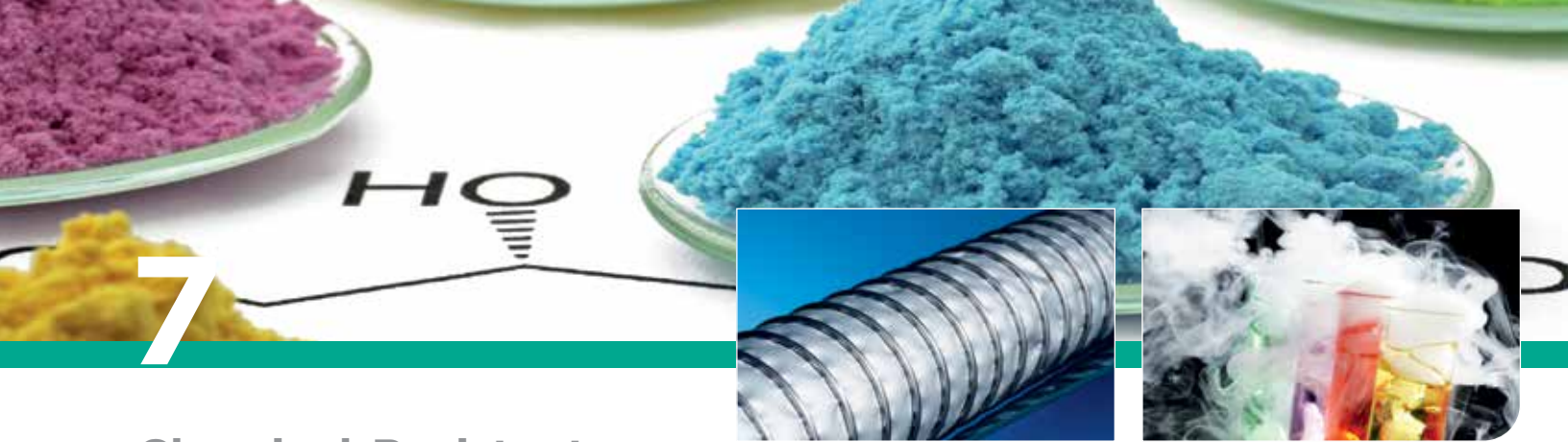
- Oven manufacturing & heat protection
- Automotive, aircraft & shipbuilding industries
- Defense systems
- Mining & steel industry
- Exhaust gas extraction for high-performance engine test-benches in the automotive industry
- Exhaust gas extraction for larger engines
- Dynamometer testing

Available in:

ID: 3" to 36"
Color: red
Temperature Range*
-75°F to +2010°F
Intermittent to +2370°F

*Hoses used for vehicle exhaust extraction, or operating near maximum temperature, must be used within a properly designed fan system to avoid damaging the hose. Smoke may be seen under positive pressure or with low extraction rates. Please consult your local representative for more details.

7



Chemical-Resistant Hoses

Suction & transport hoses for aggressive gases & fine-particled media such as dusts and powders in the chemicals industry

Master-Clip PTFE



Suction & Transport Hose, PTFE-coated glass fabric, excellent chemical and weather resistance, hose wall made of non-stick material for optimum flow characteristics, highly flexible, extremely lightweight

Applications

- Suction/transport hose of corrosive media
- Paint mist extraction
- Solvent extraction
- Paint, wood and paper industries
- Chemical plants
- Pharmaceutical industry
- Low pressure applications

Available in:

ID: 2.5" to 36"
Color: light brown
Temperature Range
-235°F to +480°F
Intermittent to +520°F

Master-Clip PTFE MP



Suction & Transport Hose, laminated PTFE film, excellent chemical and weather resistance, good tear strength, hose wall made of non-stick material for optimum flow characteristics, highly flexible

Applications

- Suction/transport of abrasive solids, paper fibers, granules, liquids, gases, rough-grained media with a high flow-rate, e.g. wood shavings & dust
- Oil mist extraction/suction
- Wet/dry process conveyance
- Pharmaceutical industry

Available in:

ID: 2.5" to 16"
Color: natural
Temperature Range
-290°F to +600°F

Master-Clip PTFE H



Suction & Blower Hose for aggressive media up to +350°F

Applications

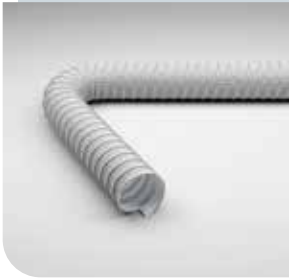
- Suction & conveyance of aggressive media, explosive gases & fumes
- Paint mist extraction
- Paint, wood and paper industry
- Solvent extraction
- Pharmaceuticals industry
- Low pressure range
- Chemicals industry

Available in:

ID: 2.5" to 36"
Color: inside white, outside black
Temperature Range
-40°F to +350°F
Intermittent to +375°F

Chemical-Resistant Hoses

Master-Clip PTFE S



Suction & Blower Hose for aggressive media up to +480°F

Applications

- Suction & conveyance of aggressive media, explosive gases & fumes
- Paint mist extraction
- Paint, wood and paper industry
- Solvent extraction
- Pharmaceuticals industry
- Low pressure range
- Chemicals industry

Available in:

ID: 3" to 36"
Color: inside black, outside silver-gray
Standard length: to 25'
Temperature Range
-90°F to +480°F
Intermittent to +520°F

Master-Clip NEOPRENE



Medium & high temperature hose up to +300°F, Neoprene-coated fabric

Applications

- Air-conditioning & ventilation systems
- Engine manufacturing
- Exhaust gas extraction
- Suction/extraction of aggressive media
- Transport of hot & cold air
- Automotive manufacturing
- Welding industry
- Low pressure range
- Chemicals industry

Available in:

ID: 2.5" to 36"
Color: black
Temperature Range
-30°F to +300°F
Intermittent to +375°F

Master-Clip HYPALON®



Medium & high temperature hose up to +350°F

Applications

- Air-conditioning & ventilation systems
- Engine manufacturing
- Exhaust gas extraction
- Suction/extraction of aggressive media
- Transport of hot & cold air
- Granulate drying
- Standard industrial hose
- Automotive manufacturing
- Low pressure range
- Extractor units

Available in:

ID: 2.5" to 36"
Color: outside black, inside green
Temperature Range
-40°F to +350°F
Intermittent to +375°F

Master-Clip VITON®



Medium & high temperature hose up to +410°F

Applications

- Paint mist extraction
- Suction/extraction of aggressive media in medium temperature range
- Low pressure range
- Chemicals industry

Available in:

ID: 2.5" to 36"
Color: red
Temperature Range
-15°F to +410°F
Intermittent to +465°F

Master-Clip KAPTON®



Medium & high temperature hose up to +750°F, excellent chemical resistance

Applications

- Suction of aggressive gases at high temperatures
- Exhaust gas routing in gauge pressure & low pressure ranges
- Vehicle & engine manufacturing
- Exhaust gas extraction for high-performance
- Engine test-benches in the automotive industry

Available in:

ID: 2.5" to 36"
Color: inside yellow-gold, outside white
Temperature Range
-435°F to +750°F

Chemical-Resistant Hoses

Master-Clip SILICONE



Medium & high temperature hose up to +570°F

Applications

- Engine manufacturing
- Hot & cold air conveyance
- Machine manufacturing
- Automotive manufacturing
- Low pressure range
- Extractor units
- Defense systems
- Aircraft manufacturing

Available in:

ID: 2.5" to 36"
Color: silver-gray
Temperature Range
-75°F to +570°F
Intermittent to +625°F

Master-NEO 2



Medium & high temperature hose up to + 300°F double-layered

Applications

- Chemicals industry
- Conveyance of air & gaseous media with high nominal and ambient temperatures
- Hot air hose for granulate dryer
- Machine & engine manufacturing
- Shipbuilding
- Plastic processing industry
- Waste incineration plants
- Automotive & aircraft manufacturing

Available in:

ID: 2" to 12"
Color: black
Standard length: 13'
Temperature Range
-65°F to +300°F

Hose can't be bonded.

Master-SIL 2



Medium & high temperature hose up to +600°F, double-layered

Applications

- Chemicals industry
- Conveyance of air & gaseous media with high nominal and ambient temperatures
- Hot air hose for granulate dryer
- Machine & engine manufacturing
- Shipbuilding
- Plastic processing industry
- Waste incineration plants
- Automotive & aircraft manufacturing

Available in:

ID: 1" to 12"
Color: orange
Standard length:
13' (1"-12" dia), 20' (2", 2.5", 3", 4", 5", 6", 8" dia)
Temperature Range
-75°F to +600°F

Master-TPR PLUS



Suction & Transport
Hose made with a thermoplastic elastomer reinforced fabric, lightweight, good chemical resistance to alkalies, acids and solvent gases, smooth inside for optimum flow

Applications

- Dust collection hose for the woodworking industry
- Fume extraction/welding arm
- Drying/plastics equipment
- Air-conditioning/ventilation systems
- Robotic arm covers
- Light material handling
- General purpose applications

Available in:

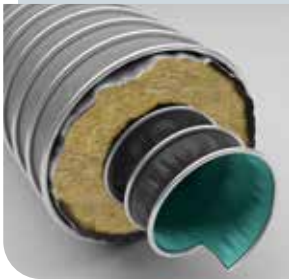
ID: 2" to 16"
Color: black
Standard length: to 25'
Temperature Range
-60°F to +275°F
Intermittent to +300°F

8



Specialty Hoses

Master-Clip Thermo & Insulating Hoses



Thermo and insulating hose for maintaining cold or hot temperature air flows, asbestos-free insulation material, good sound proofing, flexible

Applications

- Air conditioning/ventilation
- Radiant heat and cold protection
- Engine construction
- Vehicle construction

Temperature Range*

Depending on the combination of the materials for the inner and outer hose type

Master-Clip Combo Hoses



Specialty hoses for high temperatures +350°F to +2000°F.

Bonding fees apply.

Applications

- Vehicle exhaust systems
- Engine & dynamometer testing
- High temperature conveyance

Recommended Combinations:

- Carflex 350/Carflex 570
- Master-Clip HT 750/Master-Clip HT 1200
- Master-Clip HT 1000/Master-Clip HT 1500
- Master-Clip 1200/Master-Clip 2010

Temperature Range*

+350°F to +2000°F

Depending on the hose combination - contact factory for details.

MD All Weather Flexible Duct



Neoprene-coated polyester fabric hose with a PVC coated polyester vapor barrier for indoor or outdoor use on temporary conditioned air systems

Properties

- Flame-resistant to UL94, UL214
- Water repellent fabric
- R8 insulation
- Highly flexible
- Compressibility 1:3
- Small bend radius
- Vibration-proof

Available in:

ID: 12" to 24"

Standard length: to 25'

Available end treatments: raw

Temperature Range

-30°F up to 300°F

Features & Benefits

- Standard R8 insulation provides better energy performance compared to R4 insulation.
- Galvanized steel helix creates a rigid flexible core that maintains its shape at all turns and offsets.
- Manufactured in Houston, Texas, allows for quick response and service on all projects throughout the United States.
- Standard lead time is 4 to 6 weeks, depending on the quantity ordered and desired end treatment.

*Hoses used for vehicle exhaust extraction, or operating near maximum temperature, must be used within a properly designed fan system to avoid damaging the hose. Smoke may be seen under positive pressure or with low extraction rates. Please consult your local representative for more details.

9



Pneumatic Tubing & Profiles

Highly flexible, thermoplastic pneumatic tubing & profiles offer superior quality for a precise and reliable fit

Pneumatic Tubing & Profiles



- Lightweight
- Excellent temperature resistance
- Highly resistant to shock and impact
- Excellent compressive strength
- High chemical resistance to oil, grease, fuels, solvent and hydraulic fluids
- Excellent resistance to UV-rays

- Highly resistant to stress cracking
- Excellent abrasion resistance characteristics
- Water insensitive
- Easily fitted
- Minimal pressure loss
- Available in a range of colors
- Calibrated

Temperature Range

-40°F up to 195°F

Applications

Compressed air, vacuum, hydraulics*, fuels, grease lubrication systems, foodstuffs*

*A special grade may be required.

Quality, Precision, Delivery Reliability and **competent advice** are the cornerstones for the ongoing expansion of our pneumatic tubing & profiles market position.

Starting with the choice of material and cost effectiveness, down to matters of design, our experts accompany you in a competent and comprehensive fashion, regardless of whether you require a standard product or a custom design.

To protect our own everyday high quality requirements, we use special test and measuring equipment, as well as laboratory equipment. As a result, we have the latest technology to safeguard the product quality at our disposal, right from the time of your initial inquiry until your product is shipped. Along with this, our lofty claim to quality is guaranteed through the resolute realization of quality control systems in accordance with ISO 9001 and ISO 13485.

Furthermore, we apply the established Environmental Management System according to DIN EN ISO 14001 and the Energy Management System according to DIN EN ISO 50001.

10



Master-Lock Metal Duct

Master-Lock mechanical joints makes an air tight seam, while the circumferential corrugations provide excellent strength and flexibility

Master-Lock Aluminum



Corrugated aluminum flexible duct, adhesive-free, air tight seams, excellent strength, highly flexible, center line radius minimum one diameter, eliminates sagging or drooping

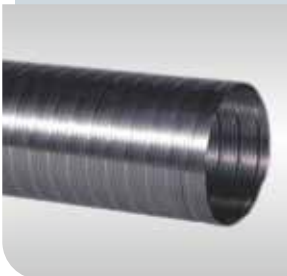
Applications

- Air-conditioning & ventilation systems
- Air supply & extraction
- Applications that require low pressure loss
- Easily cut to size & hand formed into elbows
- Eliminates sagging or drooping

Available in:

ID: 3" to 18"
Standard length: 8'
Temperature Range
-60°F to +600°F

Master-Lock Stainless Steel



Corrugated 316 Stainless steel flexible duct, adhesive-free, air tight seams, excellent strength, good flexibility, center line radius minimum one diameter, eliminates sagging or drooping

Applications

- Air-conditioning & ventilation systems
- Air supply & extraction
- Applications that require low pressure loss
- Easily cut to size & hand formed into elbows
- Eliminates sagging or drooping
- Stainless steel requirements

Available in:

ID: 3" to 18"
Standard length: 8'
Temperature Range
-60°F to +1500°F

Master-Lock Silencer



Sound attenuator, inner core perforated & corrugated aluminum, packed fiberglass insulation, outer core corrugated aluminum, mechanically fastened aluminum fittings on each end

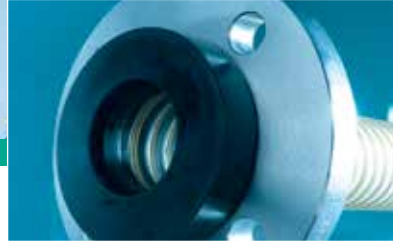
Applications

- Sound attenuation before & after the terminal box where discharge noise and radiated noise is undesirable
- Straight or elbow silencer for exposed air systems
- Return air connection on fan powered terminal boxes & heat pumps
- Final sound attenuator to eliminate noise at air devices

Available in:

ID: 4" to 14"
Standard length: 5'
Temperature Range
-60°F to +250°F

11



Installation & Connections

Connection solutions for almost any application, from standard connectors to tailor-made & customer-specific connections

Clip-Grip Hose Clamp



Special clamp for Master-Clip hoses

Applications

- Special clamp for all hose types from Master-Clip series for mobile & stationary units

Available in:

Clamping range from 1.6" to 36", bridge
Housing made from 201 stainless steel

Car-Grip Hose Clamp



Special clamp for Carflex-Super, Master-PUR STEP, Master-PUR SL, L, H, L-X, & H-X hoses

Applications

- Special clamp for Carflex Super and Master-PUR STEP hoses for mobile & stationary units

Available in:

Clamping range from 2.4" to 16", bridge
Housing made from 201 stainless steel

Worm Gear Clamp



Standard clamp for universal requirements, Master-SIL 2 & Master-SIL 2 Nomex

Applications

- Special clamp for mounting light hose types onto connector brackets on mobile & stationary units

Available in:

Clamping range from 1.5" to 20", bridge.
Housing band made from 201 stainless steel & screw casting made from 305 stainless steel

Installation & Connections

Bolt Clamp



Standard clamp for universal requirements, Master-PUR HH, HHX, & Master-PUR Performance

Applications

- Special clamp for connecting medium & heavy duty hoses to connectors on mobile & stationary units

Available in:

Clamping range from 1.2" to 9", bridge
Housing made from 201 stainless steel

Hose Reducer



Reducer for light /medium weight hoses

Applications

- Extension, coupling and connection of light to medium weight hoses
- 26 Gauge Galvanized steel

Available in:

ID: 4" to 20"
Standard: 26 Gauge Galvanized Steel
Contact factory for additional gauge and material options.

Hose Connector



Sheet steel connectors for light/medium weight hoses

Applications

- Extension, coupling & connection of light to medium weight hoses
- 26 Gauge Galvanized steel

Available in:

ID: 3" to 20"
Standard: 26 Gauge Galvanized Steel
Contact factory for additional gauge and material options.

PU Screw Cuff EC



Special screw on cuff for Master PUR SL-F, L-F, H-F, L-X, H-X, Electroconductive, $R_o \leq 10^4$,

Applications

- Special screw cuff for Master-PUR L/H & Master-PVC L/H hoses
- Industrial vacuum cleaners
- Suction & blower units
- Conveyance units
- 38 mm will fit 38mm and 40mm hoses

Available in:

ID: 1.2" to 2.8"
Color: black
Temperature Range
-40°F to +195°F
Intermittent to +257°F

Combiflex PU Cuff



PU End Cuff for Master-PUR Hoses on pipe connections, $R_o \leq 10^9$

Applications

- Special cuff for all Master-PUR L/H hose types
- Screwable or cast-on mounting
- 38 mm will fit 38mm and 40mm hoses

Available in:

ID: 3" to 8"
Color: black
Temperature Range
-40°F to +195°F
Intermittent to +257°F

12



MASTERDUCT Terms & Conditions

PRICES: To the current prices are to be added any sales/excise taxes now or hereafter imposed upon the Seller resulting from the sale or delivery hereunder. All orders accepted by our Company are invoiced on the basis of our Company's prices in effect at the time indicated or time of shipment. All prices are subject to change without notice.

NON-STANDARD LENGTHS: Additional setup fees and lead times may apply to non-standard lengths. Contact factory for details.

ADD PER CUT FOR NON-STANDARD: A minimum 20% add for non-standard lengths cut from stock. A minimum \$3 add per piece for non-standard lengths cut during production.

NON-STANDARD DIAMETERS: Additional setup fees may apply to non-standard diameters. Non-standard diameters are indicated as C/F in the Price column in the current Company price list. Contact factory for details.

SPECIAL ORDERS: Any item indicated or not listed in the current Company price list shall be considered a Special Order item. Special Order items may not be canceled or returned once ordered.

RETURNS: Returns based on non-performance will not be accepted if hose or ducting was selected by customer without consultation from Masterduct. All product, installation and service orders submitted to and accepted by Masterduct are subject to a 25% restocking fee if canceled by the issuing company or one of its authorized partners. No return product will be accepted without written approval. Non-stock and non-standard length items are non-returnable.

INSPECTION AND NOTIFICATION: It is the customer's responsibility to examine the order upon delivery in respect to their quantity, weight, boxes received and packaging without undue delay and have sample quality tests started within 24 hours. Masterduct must be notified in writing of quality defects and/or missing boxes without undue delay, however, no later than one week after the delivery of the product, otherwise, the deliveries are deemed accepted. If product is defective, customer must contact Masterduct, or their Regional Sales Manager, to request an RMA as soon as possible after being notified of an issue. Information will be gathered from customer and, if needed, replacement product is to be ordered at regular purchase price. Customer will receive an RMA form to be attached to material being returned. Once material is received at Masterduct, the Quality Engineer will review claim details and the returned product, contacting the customer if needed to clarify any questions. Based on those findings, the Regional Sales Manager will be notified of the determination of defect, which they will share with the customer. If the product failure is not caused by a manufacturer's defect, a credit for the material will not be approved. Customer is notified of the decision by a Regional Sales Manager. If a credit is given, a copy of the credit memo will be sent by the inside sales team to the customer. In the case of missing boxes; customer will need to place an order at regular purchase price and report the loss to the shipper for reimbursement if they specified the shipping method. If freight is prepaid or prepay and add, the customer will still need to place an order for the material at regular purchase price but Masterduct will notify the shipper and file a claim accordingly.

CANCELLATIONS: To cancel a full or partial order, Masterduct must receive a cancellation request within 48 hours of order placement. Cancellation requests may be emailed to orders@masterduct.com. All orders are considered in production until Masterduct confirms the cancellation. If you do not receive a confirmation canceling an order within 24 hours, contact customer service at (713) 462-5779. Masterduct is not responsible for lost or failed email messages.



FREIGHT: Shipment terms are F.O.B. Houston, Texas. Prepaid on \$3,500.00 net standard stock items per purchase order within the continental US. Excludes products with special shipping requirements and 1) 24" or larger Clip hoses, 2) 12" or larger Master-Clip HT 2010, 3) 14" or larger Master-PUR and Master-TPR, and 4) insulated hoses. All other orders will be shipped freight collect to the consignee using a carrier of our choice. If you have a preferred carrier please include shipping instructions on the purchase order.

STOCK: Products shipped by next business day if order received by noon the previous day. Prepaid on \$3,500.00 net standard stock items per purchase order within the continental US. Excludes products with special shipping requirements and 1) 24" or larger Clip hoses, 2) 12" or larger Master-Clip HT 2010, 3) 14" or larger Master-PUR and Master-TPR, and 4) insulated hoses. .

Minimum order \$100.00 net.

IMPORTANT: Distributors or their customers are responsible for all claims of freight damage regardless of carrier used. Masterduct will not provide a replacement or compensation for any merchandise damaged in transit.

LIMITED WARRANTY

Above delivery subject to delay by reason of acts of God, strikes, lockouts, fires or any other contingency, whether of like nature or otherwise, beyond control of the Seller. Delivery promises are based on current stock position and are subject to the demand of prior customer orders.

A. No warranty is made regarding the suitability or compatibility of any Masterduct product for a particular application or purpose. The Customer is responsible for the final selection and utilization of Masterduct products for its use. The Customer assumes all liability for the consequences of performance, application, use and/or misuse by employees and/or Customers of products purchased from Masterduct, Inc.

B. Hose and other product items subject to wear during the normal use of the product shall not be covered under warranty.

C. Products not manufactured by Masterduct or not part of an assembly manufactured by Masterduct shall be warranted only to the extent provided by the manufacturer. This includes but is not limited to high temp and heavy-duty hose.

LIMITATION OF WARRANTY

Masterduct makes no other warranties, express or implied, including warranties of merchantability and fitness for a particular use, and shall not be liable for incidental or consequential damages such as, but not limited to, lost profits, loss of use of other equipment or increases in costs or expenses.



Chemical Resistance Chart

1: EXCELLENT RESISTANCE 2: GOOD RESISTANCE 3: MODERATE RESISTANCE X: NOT RESISTANT	PUR - Ester	PUR MHR	SILICONE	HYPALON®	VITON®	PVC	PE	PTFE	NEOPRENE	KAPTON®	TPR PLUS
Acetone	3	X	2	2-3	X	3	1-2	1	3	1	1
Acetylene Gas	1	1	2	2	1	1	3	1	2	1	1
Ammonia, Gaseous 20°C	x	3	1	2	1	1	1	1	1	1	1
Aniline (Aminobenzene)	x	x	2	3	1-2	2-3	2-3	1	x	1	1
Argon Gas	1	1	1	1	1	1	1	1	1	1	1
ASTM Fuel A	1	1	x	1	1	3-x		1	1		x
ASTM Fuel B	x	x	x	x	1	3-x		1	x		x
ASTM Fuel C	x	x	x	x	1	3-x		1	x		x
Benzene	3-x	3-x	x	3-x	2-3	3-x	3-x	1	x	1	x
Black Lye	x	x	x	1	1			1			
Boric Acid	3	1	1	1	1	1	1	1	x	1	1
Bromine	x	x	x	x	1	3	x	1	x	1	3
Butane Gas	1	1	3-x	2	1	2	3-x	1	2	1	2
Butanone (MEK)	x	x	x	x	x	x	2	1	3	1	1
Calcium Chloride	3	1	1	1	1	1	1	1	1	1	1
Cane Sugar	3	1	1	1	1	1	1	1	1	1	1
Carbolic Acid (Phenol)	3-x	3-x	3	2-3	1	x	x	1	3	1	2-3
Carbon Dioxide, Solid	1	1	1	1	1	1	1	1	1	1	1
Carbon Dioxide, Gas	1	1	1	1	1	1	1	1	1	1	1
Carbon Monoxide	1	1	1	2-3	1	1	1	1	2	1	1
Carbon Tetrachloride	x	3	x	x	1	x	x	1	x	1	x
Chlorine, Dry	x	x	x	2-3	1	3-x	x	1	3-x	1	2-3
Chlorine, Wet	x	x	x	2-3	1	x	x	1	x	1	2-3
Chlorobenzene	x	x	x	x	1	x	3	1	x	1	x
Chloroform (Trichloromethane)	x	x	x	x	1	x	x	1	x	1	x
Chromic Acid	x	3	3	2-3	2	1	3	1	3	1	1
Citric Acid	2	1	2	2-3	1	2	2	1	1	1	1
Detergents	3	2	1	1	1	1	1	1	2	1	1
Diesel Oil	2	2	3	3	1	3	2	1	x	1	3
Diethylene Glycol	3	3	2	2	1	3	1-2	1	1	1	1
Ethane Gas	2	2	3	2-3	1	1	1	1	2	1	2
Ethanol (Ethyl Alcohol)	2	2	2	1	2-3	1-3	1	1	1	1	1
Ethylene Chloride	x	x	x	x	2	x	x	1	x	1	3
Ethylene Glycol	2-3	2-3	1	1	1	1	1	1	1	1	1
Formaldehyde	2-3	2-3	1-2	1-2	2-3	2	1	1	2	1	1
Formic Acid (0.1)	3	2	2	1-2	3	1-2	1	1	1		2
Glycerine	1	1	1	1	1	1	1	1	1	1	1
Helium	1	1	1	1	1	1	1	1	1	1	1

1: EXCELLENT RESISTANCE 2: GOOD RESISTANCE 3: MODERATE RESISTANCE X: NOT RESISTANT	PUR - Ester	PUR MHR	SILICONE	HYPALON®	VITON®	PVC	PE	PTFE	NEOPRENE	KAPTON®	TPR PLUS
Heptane	2	2	x	2	1	2-3	2-3	1	2-3	1	x
Hexane	2	2	x	1-2	1	1-2	3	1	1-2	1	x
Hydrogen	1	1	3	1	1	1	1	1	1	1	1
Iodine	x	x	x	2	1	2-3	2-3	1	3	1	1
Isobutanol (Isobutyl Alcohol)	3	x	1	1	1	1	1	1	1	1	2
Isooctane	2	2	3	2	1	1	3	1	3	1	x
Isopropanol (Isopropyl Alcohol)	2	3	1	1	1	2	1	1	2	1	1
Kerosene	2	1	3	2-3	1	1	3	1	2	1	x
Lactic Acid	x	2	2	2	1	3	2	1	3	1	
MEK (Methyl Ethyl Ketone)	x	x	x	x	x	x	2	1	3	1	1
Menthol	3	3	x	1	1		1	1			1-2
Methane	2	3	3-x	2-3	1	1-2	1	1	2-3	1	2
Methanol (Methyl Alcohol)	2	3	1	1	2	1	1	1	1	1	1
Methylene Chloride	x	x	x	x	2	x	x	1	x	1	3
Naptha	2	2	3	x	1	2-3	2-3	1	3	1	3-x
Napthalene	2	2	3	3	1	x	2-3	1	x	1	
Natural Gas, Wet	2	1-2	2-3	1	1	1	2	1	1	1	2
Natural Gas, Dry	1	1	2-3	1	1	1	1	1	1	1	2
Nitric Acid, 10%	3	3	3	1-2	1	1	2	1	2	1	1
Nitrogen	1	1	1	1	1	1	1	1	1	1	1
Nitrous Oxide	1	1	1	1	1	1	1	1	1	1	1
Oleic Acid	1	1	x	3-x	2	2	2-3	1	x	1	2
Oleum (Fuming Sulfuric Acid)	x	x	x	x	1	x	x	1	x	1	x
Ozone	1	1	1	1	1	2	3	1	2-3	1	1
Paraffin	1	2	2	3	1-2	1-2	2-3	1	2-3	1	2
Perchloroethylene	x	x	x	x	1	3	x	1	x	1	x
Propane Gas	1	1	x	2-3	1	1	2	1	1	1	1
Salt Water (Sea Water)	x	2	1	1	1	1	1	1	1	1	1
Sodium Hydroxide (25% 20°C)	x	2	2	1	3	1	x	1	2	2	1
Sodium Hypochlorite 10%	3	2	2	1	1	1	2	1	2-3	1	2-3
Sulfuric Acid 10%	3	2	3	1	1	1	1	1	2	1	1
Sulfuric Acid 90%	x	x	x	2	1	x	3	1	3	1	1
Tetrahydrofuran (THF)	3	3	x	x	x	x	3	1	x	1	2
Toluol	x	x	x	x	1	x	3-x	1	x	1	1
Trichloroethylene	x	x	x	x	1-2	x	x	1	x	1	2
Turpentine	1-2	1-2	x	x	1	3	1-2	1			x
Urea	3	1	1	1	1	1	1	1	2-3	1	1
Vinegar	x	3	1	1	1	2	1	1	2	1	1
Xylene	x	x	x	x	1-2	x	2-3	1	x	1	x



Locations Worldwide

Germany

Masterflex SE
 Willy-Brandt-Allee 300
 45891 Gelsenkirchen
 Tel +49 209 97077-0
 Fax +49 209 97077-33
www.masterflex.de

Germany

Novoplast Schlauchtechnik GmbH
 In den Langen Stuecken 6
 38820 Halberstadt
 Tel +49 3941 6869-0
 Fax +49 3941 6869-40
www.schlauchtechnik.de

Germany

FLEIMA-PLASTIC GmbH
 Neustadt 2
 69483 Wald-Michelbach
 Tel +49 6207 92412-0
 Fax +49 6207 92412-30
www.fleima-plastic.de

Germany

Matzen & Timm GmbH
 Nordportbogen 2
 22848 Norderstedt
 Tel +49 40 853212-0
 Fax +49 40 8587-23
www.matzen-timm.de

Germany

APT
 Advanced Polymer Tubing GmbH
 Bonner Str. 203
 40589 Dusseldorf-Benrath
 Tel +49 211 819744-0
www.apptubing.de

France

Masterflex SARL
 Z.A. des 2B
 01360 BÉLIGNEUX
 Tel +33 4 780602-02
 Fax +33 4 780621-56
www.masterflex.fr

Czech Republic

Masterflex Cesko s.r.o.
 Prumyslová 917
 34815 Planá
 Tel +420 374 6294-69
 Fax +420 374 6310-31
www.masterflex.cz

Sweden

Masterflex Scandinavia AB
 Kabelgatan 13
 43437 Kungsbacka
 Tel +46 300 1717-0
www.masterflex.se

United Kingdom

Masterflex Technical Hoses Ltd.
 Prince of Wales Business Park
 Vulcan Street
 Oldham, OL 1 4ER, Lancashire
 Tel +44 161 62680-66
 Fax +44 161 62690-66
www.masterflex-uk.com

USA

Masterduct, Inc.
 5235 Ted Street
 Houston, TX 77040
 Tel +1 713 462 5779
www.masterduct.com

Brazil

Masterduct Brasil
 Comercio de Dutos LTDA.
 Rua dos Estados,
 18-Villa Industrial
 06516-310 Santana de Parnaíba-SP
 Tel +55 11 415151-00
 Fax +55 11 415125-96
www.masterduct.com.br

China

Masterflex Hoses
 (Kunshan) Co. Ltd.
 395 Jiande Road
 Zhangpu Town, Kunshan,
 Jiangsu Province
 P.R. 215321
 Tel +86 512 5795-2886
www.masterflex.cn

Asia-Pacific

Masterflex Asia Pte. Ltd.
 German Centre for Industry &
 Trade Pte Ltd.
 25 International Business Park
 04-60A German Centre
 Singapore 609916, Singapore
 Tel +65 6897 45-85
 Fax +65 6897 45-81
www.masterflex.asia



Masterduct
5235 Ted Street
Houston, TX 77040
USA
Tel. +1 713 462-5779
www.masterduct.com

 **MASTERDUCT**
Connecting Values

Masterduct Catalog - 022025