

# MEDIUM/HIGH TEMPERATURE HOSE FOR TEMPERATURES UP TO +1000°F

## Master-Clip HT 1000

### Material

Hose wall double layer:

Inner wall: heat resistant impregnated glass fabric

Outer wall: special coated high temperature fabric, asbestos free, reinforced by woven in stainless steel wire

External helix: galvanized steel

### Applications

- Hot air
- Suction plants
- Furnace construction
- Iron and steel works
- Engine construction
- Radiant heat protection
- Primarily suited as extraction hose
- Low pressure applications

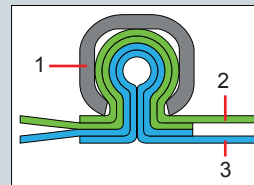
### Properties

- Flame-resistant
- Very high temperature resistance
- Silicone-free
- Highly flexible
- Extreme compressibility 1:6
- Small bend radius
- Improved vacuum resistance by woven in reinforcement
- External steel helix protects against abrasion
- Suitable for continually flexing
- Special clamping method guarantees high tensile strength between hose material and external helix
- To maximize life of duct and exhaust system effectiveness, it is recommended to utilize a negative pressure exhaust system and introduce ambient air at the inlet.

© Masterflex SE

### Construction

1. External helix
2. Outer wall: special-coated high temperature fabric
3. Inner wall: heat resistant impregnated glass fabric



© Masterflex SE

### Temperature Range

- -5°F up to +1000°F
- Intermittent to +1100°F
- Small amounts of smoke maybe given off when used under positive pressure or with low extraction rates.

# Master-Clip HT 1000

Dia (in.)	Positive (in. w.c.)	Negative (in. w.c.)	*Bending radius (in.)	Weight (lbs./ft.)	Product Code
2.00	342	141	1.20	0.50	235-050-111
2.50	237	84	1.56	0.57	235-063-111
3.00	189	62	1.80	0.65	235-075-111
3.50	143	44	2.16	0.74	235-090-111
4.00	121	35	2.40	0.83	235-100-111
4.50	104	29	2.64	0.88	235-115-111
5.00	84	22	3.00	.92	235-125-111
5.50	70	18	3.36	1.03	235-140-111
6.00	63	16	3.60	1.14	235-150-111
6.40	56	14	3.84	1.26	235-160-111
7.00	49	12	4.20	1.41	235-175-111
8.00	40	9	4.80	1.52	235-200-111
9.00	33	7	6.32	1.58	235-225-111
10.00	28	6	7.00	1.64	235-250-111
11.00	24	5	7.72	INQ	235-275-111
12.00	21	4	8.40	1.97	235-300-111
13.00	18	3	9.12	INQ	235-325-111
14.00	16	3	9.80	2.30	235-350-111
15.00	14	3	10.52	INQ	235-375-111
16.00	13	2	11.20	2.69	235-400-111
18.00	11	2	14.40	3.15	235-450-111
20.00	9	1	16.00	3.69	235-500-111
22.00	8	1	17.60	INQ	235-550-111
24.00	7	1	19.20	4.32	235-600-111
28.00	6	1	22.40	5.05	235-700-111
32.00	4	1	25.60	5.91	235-800-111
36.00	4	1	28.80	6.91	235-900-111

\*Referring to the inner side of the elbow of hose.

The above mentioned data refers to an average and ambient temperature of 68° F. Subject to technical changes and color variations. Please refer to technical data sheet when selecting hose.

## Standard Production

- Diameter: 2" to 36"
- Color: silver
- Standard lengths: 25'

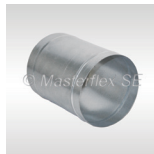
## Available on Request

- Special lengths
- Custom design with other pitches and helix sizes
- External helix also in stainless steel
- Special diameters metric

## Installation and connection possibilities



Car-Grip hose clamp, screwable



Hose connector



Hose reducer, symmetrical

Masterduct, Inc.  
5235 Ted Street  
Houston, TX 77040  
USA  
Tel. +1.713.462.5779  
Tel. +1.800.318.3300  
Fax + 1.713.939.8441  
www.masterduct.com

 **MASTERDUCT**  
Connecting Values