

SUCTION AND VENTILATING HOSE FOR CORROSIVE MEDIA UP TO +480°F

Master-Clip PTFE-S-EC

Material

Hose wall double layer:

Inner layer: PTFE-film, electrically conductive

Outer layer: silicone-coated glass fabric

External helix: galvanized steel

Applications

- Dangerous areas, where electrical conductivity is demanded
- Pharmaceutical industry
- Chemical plants
- Paint, wood, and paper industries
- Extraction of corrosive media, explosive gases and vapors
- Under increased mechanical performance and higher temperatures
- Paint mist exhaustion
- Solvent extraction
- Low pressure applications
- In areas with raised safety requirements
- Ventilation and suction in accordance with safety requirements

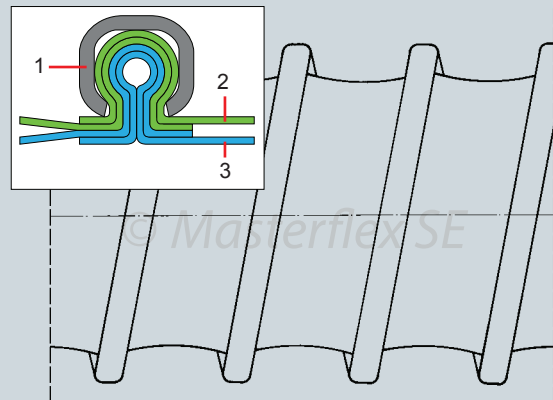
Properties

- **Surface resistance $R_0 < 10^6$ Ohm**
- Electrically conductive
- Excellent chemical resistance
- PTFE: harmless to health
- Excellent weather resistance
- High temperature and cold resistant
- Highly flexible
- Extreme compressibility 1:4
- Small bend radius
- Extra strength outer hose wall
- Inner wall with non-stick surface
- Excellent flex fatigue resistance
- Good tear strength
- Optimum flow characteristics
- External steel helix protects against abrasion
- Special clamping method guarantees high tensile strength between hose material and external helix



Construction

1. External helix
2. Outer layer: silicone-coated glass fabric
3. Inner layer: PTFE-film, electrically conductive



Temperature Range

- -5°F up to +480°F
- Intermittent to +520°F

Chem. Resistance

See resistance table

Master-Clip PTFE-S-EC

Dia (in.)	Positive (in. w.c.)	Negative (in. w.c.)	*Bending radius (in.)	Weight (lbs./ft.)	Product Code
3.00	189	62	1.80	0.5368	262-075-116
3.20	173	55	1.92	0.5368	262-080-116
3.60	143	44	2.16	0.6039	262-090-116
4.00	121	35	2.40	0.6710	262-100-116
4.40	104	29	2.64	0.7381	262-110-116
4.80	90	25	2.88	0.7381	262-120-116
5.00	84	22	3.00	0.8052	262-125-116
5.20	79	21	3.12	0.8052	262-130-116
5.60	70	18	3.36	0.8723	262-140-116
6.00	63	16	3.60	0.8723	262-150-116
6.40	56	14	3.84	0.8723	262-160-116
6.80	51	12	4.08	0.9394	262-170-116
7.00	49	12	4.20	0.9394	262-175-116
7.20	47	11	4.32	0.9394	262-180-116
8.00	40	9	4.80	1.0736	262-200-116
8.60	35	8	6.04	1.2078	262-215-116
9.00	33	7	6.32	1.3420	262-225-116
10.00	28	6	7.00	1.4091	262-250-116
11.00	24	5	7.72	1.5433	262-275-116
12.00	21	4	8.40	1.6104	262-300-116
12.60	19	4	8.84	1.7446	262-315-116
13.00	18	3	9.12	1.8788	262-325-116
14.00	16	3	9.80	2.2143	262-350-116
15.00	14	3	10.52	2.3485	262-375-116
16.00	13	2	11.20	2.5498	262-400-116
18.00	11	2	14.40	2.8182	262-450-116
20.00	9	1	16.00	3.1537	262-500-116
22.00	8	1	17.60	3.5563	262-550-116
24.00	7	1	19.20	3.9589	262-600-116
28.00	6	1	22.40	4.6299	262-700-116
32.00	4	1	25.60	5.0996	262-800-116
36.00	4	1	28.80	5.5022	262-900-116

*Referring to the inner side of the elbow of hose.

The above mentioned data refers to an average and ambient temperature of 68° F. Subject to technical changes and color variations. Please refer to technical data sheet when selecting hose.

Standard Production

- Diameter: 3" to 36"
- Color: inside black, outside silver-gray
- Standard lengths: 25'

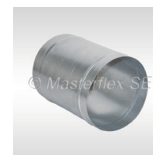
Available on Request

- Special lengths up to 50'
- Custom design with other pitches and helix sizes
- External helix also in stainless steel
- Special diameters metric

Installation and connection possibilities



Clip-Grip special hose clamp



Hose connector



Hose reducer, symmetrical

Masterduct, Inc.
5235 Ted Street
Houston, TX 77040
USA
Tel. +1.713.462.5779
Tel. +1.800.318.3300
Fax + 1.713.939.8441
www.masterduct.com

 **MASTERDUCT**
Connecting Values

090814 item_45 Master Clip PTFE S EC